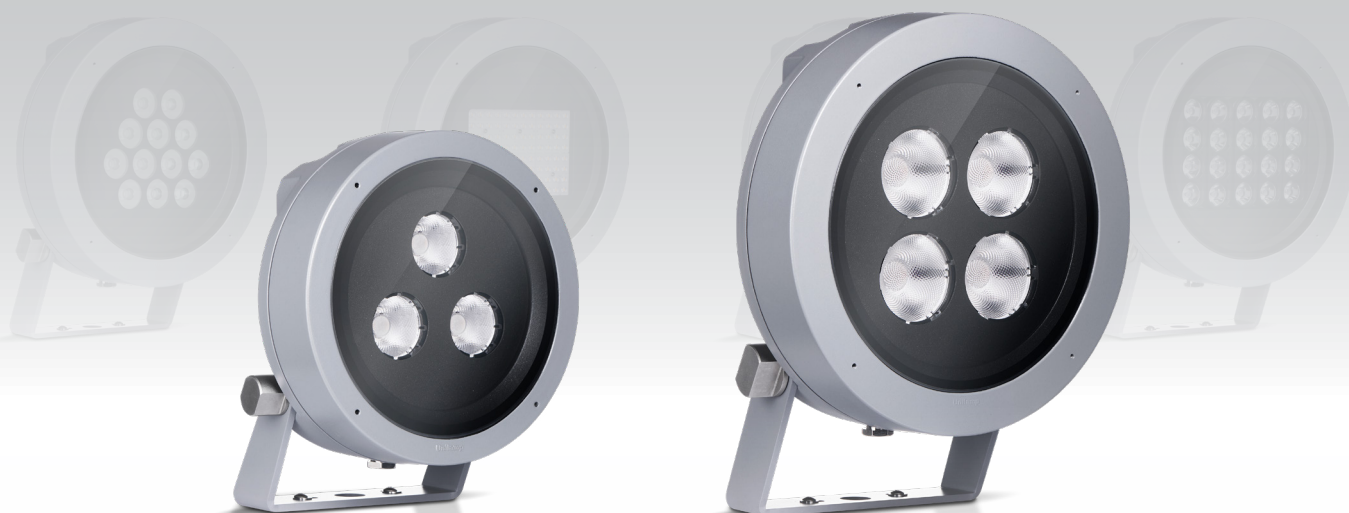


NEW FAMILY!
SPACE

“The new era of POWER PROJECTOR”



A wide choice of light distributions,
including an ultra-narrow beam down to 8°.

The Tunable white option of **SPACE** allows tasteful illumination
of architectural structures in different color temperatures.

A glare shield cap, snoot and luminaire integrated
honeycombs are available as standard accessory.

Accessories for mounting solutions
such as a pole clamp or pole arm.

SPACE

NEW
Release



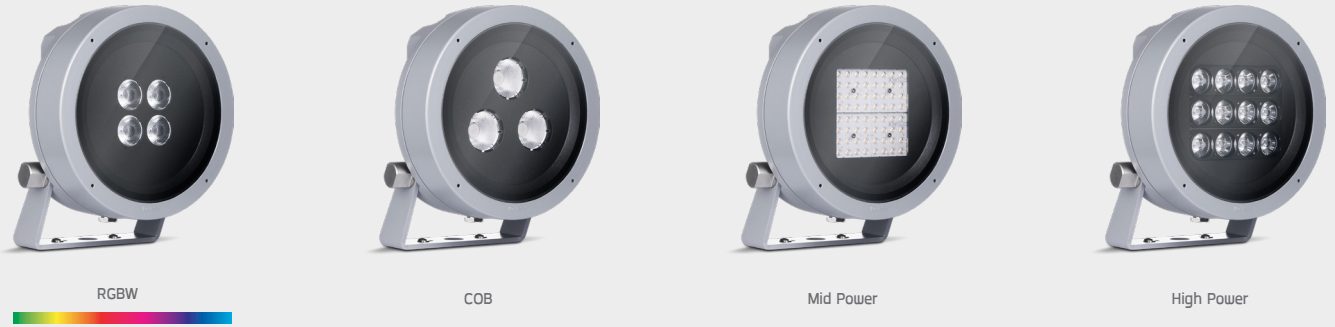
www.unilamp.co.th/en/p/space



SPACE is a range of next generation flood lights for demanding outdoor lighting tasks. Six different tailored made light engines cover a wide range of lighting applications. High efficacy 3SDCM COBs offer highest lumen output. The high power LED options for **SPACE** gives lighting designers a wide choice of carefully calculated light distributions, including an ultra-narrow beam down to 8°. The **SPACE** RGBW version with optics-based color mixing is the ideal solution for impactful highlighting of outdoor spaces. **SPACE** can also be customized to tunable white solution which allows tasteful illumination of architectural structures in different color temperatures. Regardless of LED option, a glare shield cap, snoot and luminaire integrated honeycombs are available as standard accessory. Different mounting solutions such as a pole clamp or pole arm let **SPACE** to be installed in numerous applications.

SPACE can be equipped with a built-in photocell, DALI2 control system or state of the art wireless control utilizing CASAMBI. Minimal amount of tools required for installation and the prewired electrical connection simplifies the installation process.

NEW! Mini SPACE



OR

 INPUT OPTION:

 OR

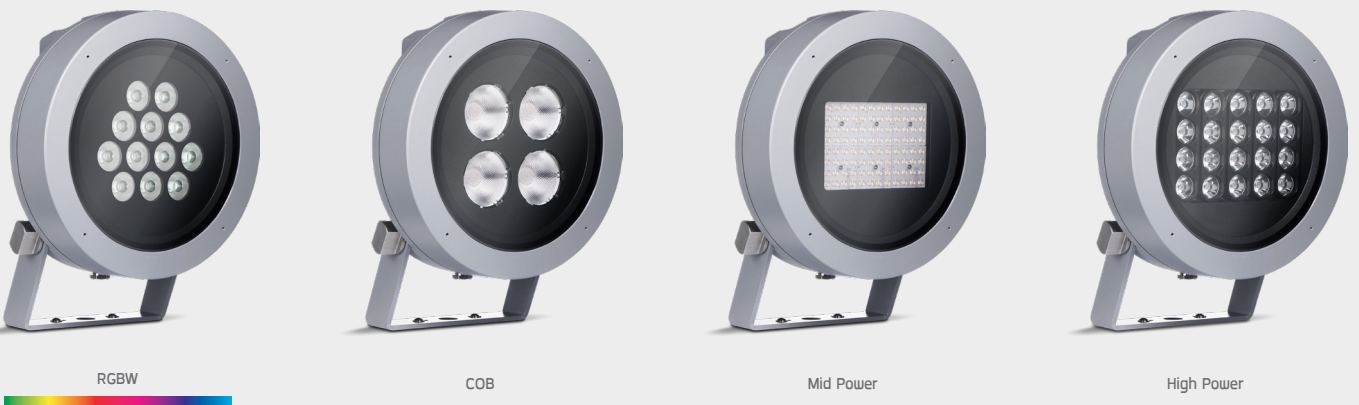
Specification

- Designed, Manufactured and Tested according to IEC 60598.
- LM6 Die Cast Aluminium housing.
- Stainless steel screws.
- Nano Ceramic surface conversion.
- Double layer coating.
- Safety glass cover.
- Post-cured silicone gasket.
- High quality LED module and driver.
- GFR PA6.6 terminal block.
- Installation must be carried out according to the enclosed product manual.

Available Color

- | | |
|------------------|------------------------------------------------------|
| Black | [replace the last 2 digits of ordering code with 01] |
| Graphite | [replace the last 2 digits of ordering code with 02] |
| Dark Grey | [replace the last 2 digits of ordering code with 03] |
| Aluminium Silver | [replace the last 2 digits of ordering code with 04] |
| White | [replace the last 2 digits of ordering code with 06] |
| Wooden Brown | [replace the last 2 digits of ordering code with 07] |





NEW! Medium SPACE



• MODULAR SOLUTIONS






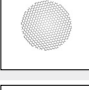
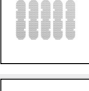

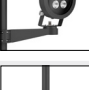


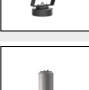



Mini SPACE

Accessory	COB	Mid Power	High Power	RGBW
 Photo Cell. (Pre-assembly from factory)	•	•	•	-
 Glare Shield Cap.	•	•	•	•
 Snoot	•	•	•	•
 Honey Comb for COB. (Pre-assembly from factory)	•	-	-	-
 Honey Comb for Optic (Pre-assembly from factory).	-	-	•	-
 Honey Comb for RGBW (Pre-assembly from factory).	-	-	-	•
 Pole Clamp Diameter 114 mm.	•	•	•	-
 Wall or Pole Mounting Arm Diameter 114 mm.	•	•	•	-
 Wall or Pole Mounting Double Arm Diameter 114 mm.	•	•	•	-
 Pole Top Mount Adaptor Spigot Size 76 mm.	•	•	•	-
 Mounting Base for dimming interface [1-10V or Dali]	•	•	•	-
 Short Pole.	•	•	•	-
 Short Pole for RGBW.	-	-	-	•
 Aluminium Pole / Galvanized Steel Pole	•	•	•	-
 RGBW LED Constant Current Driver [DALI] in IP66 Aluminium Box with additional 10kV Surge protector.	-	-	-	•

• MODULAR SOLUTIONS



Medium SPACE

Accessory	COB	Mid Power	High Power	RGBW
 Photo Cell. [Pre-assembly from factory]	•	•	•	-
 Microwave Motion Sensor. [Pre-assembly from factory]	•	•	•	-
 Snoot	•	•	•	•
 Honey Comb for COB. [Pre-assembly from factory]	•	-	-	-
 Honey Comb for Optic [Pre-assembly from factory].	-	-	•	-
 Pole Clamp Diameter 114 mm.	•	•	•	-
 Wall or Pole Mounting Arm Diameter 114 mm.	•	•	•	-
 Wall or Pole Mounting Double Arm Diameter 114 mm.	•	•	•	-
 Pole Top Mount Adaptor Spigot Size 76 mm.	•	•	•	-
 Mounting Base for dimming interface [1-10V or Dali]	•	•	•	-
 Short Pole.	•	•	•	•
 Aluminium Pole / Galvanized Steel Pole	•	•	•	-
 RGBW LED Constant Current Driver [DALI] in IP66 Aluminium Box with additional 10kV Surge protector.	-	-	-	•

Mini SPACE



COB



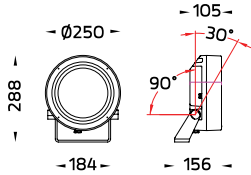
Mid Power



High Power



RGBW



Mini SPACE

• POWER PROJECTOR

Mini SPACE / 2040

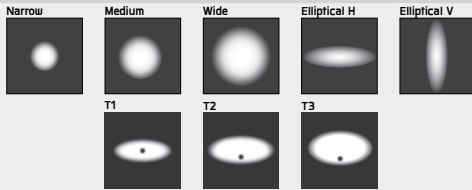
Luminaire Performance

1410 - 4980 lm

20 - 35 W

64 - 145 lm/W

Beam Options



Color Temperature

2700K/ 3000K/ 4000K/ RGBW

Controller

On-Off/ 1-10V/ DALI/ CASAMBI

Accessories

	Mounting base		Pole top mount
	Wall/ Pole mounting arm		Pole clamp
	Aluminium pole		Steel pole
	Anchor bolt		IP68 Connector
	Honey Comb Louver		Glare Shield Cap
	Snoot		Photo Cell
	Short Pole		RGBW DALI Driver

Medium SPACE



COB



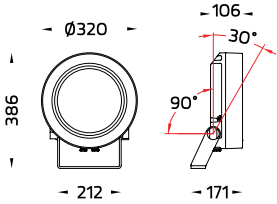
Mid Power



High Power



RGBW



Medium SPACE

• POWER PROJECTOR

Medium SPACE / 2041

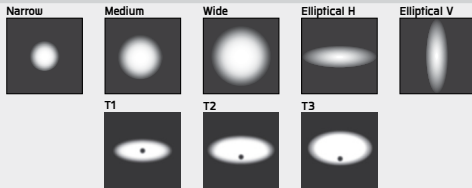
Luminaire Performance

1890 - 8970 lm

38 - 76 W

39 - 147 lm/W

Beam Options



Color Temperature

2700K/ 3000K/ 4000K/ RGBW




Controller

On-Off/ 1-10V/ DALI/ CASAMBI






Accessories



	Mounting base		Pole top mount
	Wall/ Pole mounting arm		Pole clamp
	Aluminium pole		Steel pole
	Anchor bolt		IP68 Connector
	Honey Comb Louver		Snoot
	Photo Cell		Microwave Motion Sensor
	Short Pole		

SPACE

Product Code	Product Name	Luminaire Wattage	Beam	CCT	Luminaire Lumen	Controller
OD-2040  COB	Mini SPACE	33 W	19°	2700 K 3000 K 4000 K	3370 lm 3560 lm 3740 lm	On-Off / 1-10V / DALI
		33 W	26°	2700 K 3000 K 4000 K	3340 lm 3530 lm 3710 lm	On-Off / 1-10V / DALI
		33 W	34°	2700 K 3000 K 4000 K	3350 lm 3540 lm 3720 lm	On-Off / 1-10V / DALI
		33 W	55°	2700 K 3000 K 4000 K	3150 lm 3330 lm 3500 lm	On-Off / 1-10V / DALI
		34 W	19°	2700 K 3000 K 4000 K	3370 lm 3560 lm 3740 lm	CASAMBI
		34 W	26°	2700 K 3000 K 4000 K	3340 lm 3530 lm 3710 lm	CASAMBI
		34 W	34°	2700 K 3000 K 4000 K	3350 lm 3540 lm 3720 lm	CASAMBI
		34 W	55°	2700 K 3000 K 4000 K	3150 lm 3330 lm 3500 lm	CASAMBI
OD-2040  Mid Power	Mini SPACE	25 W	T1	3000 K 4000 K	3160 lm 3320 lm	On-Off / 1-10V / DALI / CASAMBI
		25 W	T2	3000 K 4000 K	3270 lm 3440 lm	On-Off / 1-10V / DALI / CASAMBI
		25 W	T3	3000 K 4000 K	2950 lm 3100 lm	On-Off / 1-10V / DALI / CASAMBI
		25 W	90°	3000 K 4000 K	3460 lm 3640 lm	On-Off / 1-10V / DALI / CASAMBI
		35 W	T1	3000 K 4000 K	4310 lm 4550 lm	On-Off / 1-10V / DALI / CASAMBI
		35 W	T2	3000 K 4000 K	4460 lm 4710 lm	On-Off / 1-10V / DALI / CASAMBI
		35 W	T3	3000 K 4000 K	4020 lm 4250 lm	On-Off / 1-10V / DALI / CASAMBI
		35 W	90°	3000 K 4000 K	4720 lm 4980 lm	On-Off / 1-10V / DALI / CASAMBI
OD-2040  High Power	Mini SPACE	20 W	11°	2700 K 3000 K 4000 K	1820 lm 1820 lm 1970 lm	On-Off / 1-10V / DALI / CASAMBI
		20 W	29°	2700 K 3000 K 4000 K	1660 lm 1660 lm 1790 lm	On-Off / 1-10V / DALI / CASAMBI
		20 W	42°	2700 K 3000 K 4000 K	1710 lm 1710 lm 1840 lm	On-Off / 1-10V / DALI / CASAMBI
		20 W	Elliptical H	2700 K 3000 K 4000 K	1690 lm 1690 lm 1820 lm	On-Off / 1-10V / DALI / CASAMBI
		20 W	Elliptical V	2700 K 3000 K 4000 K	1690 lm 1690 lm 1820 lm	On-Off / 1-10V / DALI / CASAMBI
		27 W	11°	2700 K 3000 K 4000 K	2500 lm 2500 lm 2660 lm	On-Off / 1-10V / DALI / CASAMBI
		27 W	29°	2700 K 3000 K 4000 K	2280 lm 2280 lm 2430 lm	On-Off / 1-10V / DALI / CASAMBI
		27 W	42°	2700 K 3000 K 4000 K	2340 lm 2340 lm 2490 lm	On-Off / 1-10V / DALI / CASAMBI
		27 W	Elliptical H	2700 K 3000 K 4000 K	2320 lm 2320 lm 2470 lm	On-Off / 1-10V / DALI / CASAMBI
		27 W	Elliptical V	2700 K 3000 K 4000 K	2320 lm 2320 lm 2470 lm	On-Off / 1-10V / DALI / CASAMBI

SPACE

Product Code	Product Name	Luminaire Wattage	Beam	CCT	Luminaire Lumen	Controller
OD-2040  High Power	Mini SPACE	21 W	8°	3000 K	1580 lm	On-Off / 1-10V / DALI / CASAMBI
		28 W	8°	3000 K	2070 lm	On-Off / 1-10V / DALI / CASAMBI
OD-2040  RGBW	Mini SPACE	22 W	13° 26° 36° Elliptical H Elliptical V	RGBW	1510 lm 1470 lm 1440 lm 1410 lm 1410 lm	N/A
OD-2041  COB	Medium SPACE	72 W	22°	2700 K 3000 K 4000 K	8320 lm 8720 lm 8930 lm	On-Off / 1-10V / DALI / CASAMBI
		72 W	32°	2700 K 3000 K 4000 K	7830 lm 8210 lm 8410 lm	On-Off / 1-10V / DALI / CASAMBI
		72 W	52°	2700 K 3000 K 4000 K	7300 lm 7650 lm 7840 lm	On-Off / 1-10V / DALI / CASAMBI
		76 W	15°	2700 K 3000 K 4000 K	8260 lm 8540 lm 8970 lm	On-Off / 1-10V / DALI / CASAMBI
OD-2041  Mid Power	Medium SPACE	38 W	T1	3000 K 4000 K	4970 lm 5230 lm	On-Off / 1-10V / DALI / CASAMBI
		38 W	T2	3000 K 4000 K	5120 lm 5390 lm	On-Off / 1-10V / DALI / CASAMBI
		38 W	T3	3000 K 4000 K	4600 lm 4840 lm	On-Off / 1-10V / DALI / CASAMBI
		38 W	90°	3000 K 4000 K	5330 lm 5610 lm	On-Off / 1-10V / DALI / CASAMBI
		52 W	T1	3000 K 4000 K	6790 lm 7160 lm	On-Off / 1-10V / DALI / CASAMBI
		52 W	T2	3000 K 4000 K	7000 lm 7380 lm	On-Off / 1-10V / DALI / CASAMBI
		52 W	T3	3000 K 4000 K	6290 lm 6630 lm	On-Off / 1-10V / DALI / CASAMBI
		52 W	90°	3000 K 4000 K	7280 lm 7680 lm	On-Off / 1-10V / DALI / CASAMBI
OD-2041  High Power	Medium SPACE	47 W	10°	3000 K	3430 lm	On-Off / 1-10V / DALI / CASAMBI
		63 W	10°	3000 K	4150 lm	On-Off / 1-10V / DALI / CASAMBI
		50 W	12°	2700 K 3000 K 4000 K	4500 lm 4500 lm 4800 lm	On-Off / 1-10V / DALI / CASAMBI
		50 W	29°	2700 K 3000 K 4000 K	3990 lm 3990 lm 4260 lm	On-Off / 1-10V / DALI / CASAMBI
		50 W	40°	2700 K 3000 K 4000 K	4160 lm 4160 lm 4440 lm	On-Off / 1-10V / DALI / CASAMBI
		50 W	Elliptical H	2700 K 3000 K 4000 K	4050 lm 4050 lm 4320 lm	On-Off / 1-10V / DALI / CASAMBI
		50 W	Elliptical V	2700 K 3000 K 4000 K	4050 lm 4050 lm 4320 lm	On-Off / 1-10V / DALI / CASAMBI
		73 W	12°	2700 K 3000 K 4000 K	6450 lm 6450 lm 6880 lm	On-Off / 1-10V / DALI / CASAMBI
		73 W	29°	2700 K 3000 K 4000 K	5730 lm 5730 lm 6110 lm	On-Off / 1-10V / DALI / CASAMBI
		73 W	40°	2700 K 3000 K 4000 K	5970 lm 5970 lm 6370 lm	On-Off / 1-10V / DALI / CASAMBI
		73 W	Elliptical H	2700 K 3000 K 4000 K	5810 lm 5810 lm 6190 lm	On-Off / 1-10V / DALI / CASAMBI

Product Code	Product Name	Luminaire Wattage	Beam	CCT	Luminaire Lumen	Controller
OD-2041  High Power	Medium SPACE	73 W	Elliptical V	2700 K 3000 K 4000 K	5810 lm 5810 lm 6190 lm	On-Off / 1-10V / DALI / CASAMBI
OD-2041  RGBW	Medium SPACE	44 W	14° 26° 36° Elliptical H Elliptical V	RGBW	2300 lm 1990 lm 1890 lm 2000 lm 2000 lm	N/A
		64 W	14° 26° 36° Elliptical H Elliptical V	RGBW	3100 lm 2680 lm 2550 lm 2700 lm 2700 lm	N/A



∴ Ideal Application



Unilamp Co., Ltd.

461 Ramintra Road, Kannayao, Bangkok 10230 Thailand

Tel : +66(0)2 943 2420-1, +66(0)2 946 4170-1

Fax : +66(0)2 943 2419

unilamp@unilamp.co.th | online@unilamp.co.th



www.unilamp.co.th