



**Unilamp**



**Garden**  
LIGHTING SERIES



TELESCOPE  
SPOTLIGHT

Specification

- Designed, Manufactured and tested according to IEC 60598.
- LM6 Die Cast Aluminium, Extruded Aluminium body.
- Stainless steel screws.
- Nano Ceramic surface conversion.
- Double layer coating.
- Safety glass cover.
- Post-cured silicone gasket.
- High quality LED module.
- On-Off / 1-10V / DALI control gear.
- Installation must be carried out according to the enclosed product manual.



Accessories

	Honey comb louver		Earth spike		Tree strap		Pole clamp		Mounting arm		Anchor bolt
	Aluminium pole		Steel pole		IP68 Connector		Pre-wired cable				

ALPHA  
SPOTLIGHT



Micro ALPHA Round  
CC / CV Spotlight



Micro ALPHA Round Snoot  
CC / CV Spotlight

Specification

- Designed, Manufactured and tested according to IEC 60598.
- LM6 Die Cast Aluminium body.
- Stainless steel screws.
- Nano Ceramic surface conversion.
- Double layer coating.
- Safety glass cover.
- Post-cured silicone gasket.
- High quality LED module.
- Available with integrated driver or remote driver.
- Weather proof TPE grommet.
- Installation must be carried out according to the enclosed product manual.

Accessories

	Softening filter		Honey comb louver		Earth spike		Tree strap
	CV Driver		CC Driver		IP68 Connector		



KUBIK  
SPOTLIGHT

Specification

- Designed, Manufactured and tested according to IEC 60598.
- LM6 Die Cast Aluminium body.
- Stainless steel screws.
- Nano Ceramic surface conversion.
- Double layer coating.
- Safety glass cover.
- Post-cured silicone gasket.
- High quality LED module.
- Available with integrated driver or remote driver.
- Pre-wired cable from the factory.
- Installation must be carried out according to the enclosed product manual.



Mini Slim KUBIK  
Ground Mount / Ground Mount CVDA



Micro KUBIK  
CC / CV Ground Mount

Accessories

	Softening lens		Honey comb louver		Glare shield ring		Glare shield cap		Barn door		Earth spike
	Tree strap		Pole clamp		Pole array		Wall array		Aluminium pole		Steel pole
	Anchor bolt		RGBW DALI Driver		CC Driver		CV Driver		IP68 Connector		





Mini CAP  
Short Bollard

Mini CAP  
Bollard

Medium CAP  
Bollard

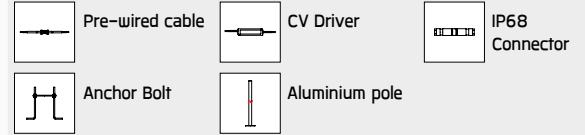
## CAP

### BOLLARDS

#### Specification

- Designed, Manufactured and tested according to IEC 60598.
- LM6 Die Cast Aluminium and Extruded Aluminium body.
- Stainless steel screws.
- Nano Ceramic surface conversion.
- Double layer coating.
- Safety glass cover.
- Post-cured silicone gasket.
- High quality LED module and driver.
- Bollard pre-wired with outdoor cable.
- Installation must be carried out according to the enclosed product manual.

#### Accessories



#### Medium CAP Version.

\* Pole is not included and has to be ordered separately.

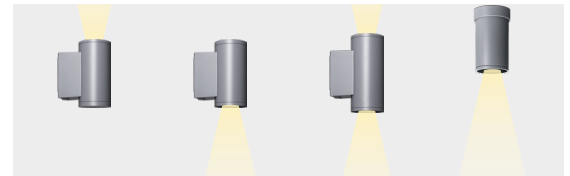
## CASA

### BOLLARDS/ WALL UP-DOWNLIGHT/ SURFACE DOWNLIGHT

#### Specification

- Designed, Manufactured and Tested according to IEC 60598.
- LM6 Die Cast Aluminium / Extruded Aluminium Housing.
- Stainless steel screws.
- Nano Ceramic surface conversion.
- Double layer coating.
- Safety glass cover.
- Polycarbonate diffuser.
- Post-cured silicone gasket.
- High quality LED module and driver.
- GFR PA6.6 terminal block.
- Weather proof TPE grommet.
- Installation must be carried out according to the enclosed product manual.

#### Accessories



CASA  
Bollard

CASA  
Short Bollard



Mini CYCLOPS  
Single Sided

Mini CYCLOPS  
Short Single Sided

## CYCLOPS

### BOLLARDS

#### Specification

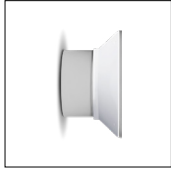
- Designed, Manufactured and tested according to IEC 60598.
- LM6 Die Cast Aluminium and Extruded Aluminium body.
- Stainless steel screws.
- Nano Ceramic surface conversion.
- Double layer coating.
- Polycarbonate protective cover.
- Post-cured silicone gasket.
- High quality LED module and driver.
- Pre-wired cable from the factory.
- Installation must be carried out according to the enclosed product manual.

#### Accessories

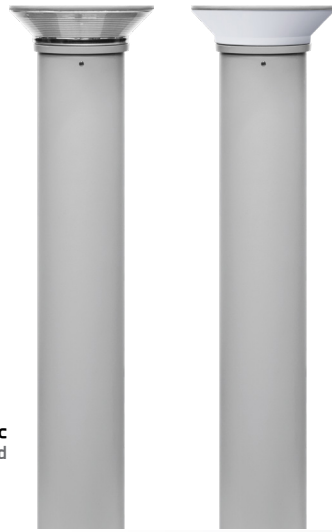




Mini AGAR Prismatic Wall Light



Mini AGAR Opal Wall Light



Mini AGAR Prismatic Bollard

Mini AGAR Opal Bollard

**AGAR**

**BOLLARDS/ GENERAL WALL LIGHT**

**Specification**

- Designed, Manufactured and tested according to IEC 60598
- LM6 Die Cast Aluminium and Extruded Aluminium body.
- Stainless steel screws.
- Nano Ceramic surface conversion.
- Double layer coating.
- Polycarbonate protective cover.
- Post-cured silicone gasket.
- High quality LED module and driver.
- GFR PA6.6 Terminal block.
- Weather proof TPE grommet.
- Bollard pre-wired with outdoor cable.
- Installation must be carried out according to the enclosed product manual.

**Accessories**



Anchor bolt



IP68 Connector



**CHARISMA**

**BOLLARDS/ WALL MOUNT LUMINAIRES**

**Specification**

- Designed, Manufactured and Tested according to IEC 60598.
- LM6 Die Cast Aluminium and Extruded Aluminium body.
- Stainless steel screws.
- Nano Ceramic surface conversion.
- Double layer coating.
- Polycarbonate diffuser.
- Post-cured silicone gasket.
- High quality LED module and driver.
- Anodized aluminium louver.
- GFR PA6.6 Terminal block.
- Weather proof TPE grommet.
- Bollard pre-wired with outdoor cable.
- Installation work has to be carried on according to the enclosed product manual.

**Accessories**



Anchor bolt



IP68 Connector



Mini CHARISMA2 Square Bollard

Mini CHARISMA1 Round Bollard



Mini CHARISMA1 Square Wall Light



Mini CHARISMA2 Round Wall Light



Mini SKUNA1 Downlight



Mini SKUNA2 Downlight



SKUNA Short Bollard

SKUNA Bollard

**SKUNA**

**BOLLARDS/ GENERAL WALL LIGHT**

**Specification**

- Designed, Manufactured and Tested according to IEC 60598.
- LM6 Die Cast Aluminium / Extruded Aluminium Housing.
- Stainless steel screws.
- Nano Ceramic surface conversion.
- Double layer coating.
- Safety glass cover.
- Post-cured silicone gasket.
- High quality LED module and driver.
- GFR PA6.6 terminal block.
- Weather proof TPE grommet.
- Installation must be carried out according to the enclosed product manual.

**Accessories**

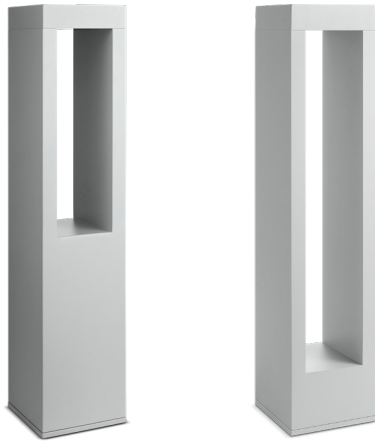


CV Driver



Anchor Bolt





**BICEPS**

**BOLLARDS**

**Specification**

- Designed, Manufactured and Tested according to IEC 60598.
- LM6 Die Cast Aluminium and Extruded Aluminium housing.
- Stainless steel screws.
- Nano Ceramic surface conversion.
- Double layer coating.
- Safety glass cover.
- Post-cured silicone gasket.
- High quality LED module and driver.
- GFR PA6.6 terminal block.
- Pre-wired cable from the factory.
- Installation must be carried out according to the enclosed product manual.

**Accessories**



Anchor bolt



IP68 Connector



**Mini PILLAR**

**BOLLARDS**

**Specification**

- Designed, Manufactured and tested according to IEC 60598.
- LM6 Die Cast Aluminium, Cast Aluminium and Extruded Aluminium body.
- Stainless steel screws.
- Nano Ceramic surface conversion.
- Double layer coating.
- PMMA diffusing lens.
- Post-cured silicone gasket.
- High quality LED module and driver.
- GFR PA6.6 terminal block.
- Installation must be carried out according to the enclosed product manual.



**Accessories**



Anchor Bolt



**SE7EN**

**BOLLARDS**

**Specification**

- Designed, Manufactured and Tested according to IEC 60598.
- LM6 die-cast aluminium and extruded aluminium housing.
- Stainless steel screws.
- Nano Ceramic surface conversion.
- Double layer coating.
- Safety glass cover.
- Post-cured silicone gasket.
- High quality LED module.
- Pre-wired cable from the factory.
- Installation must be carried out according to the enclosed product manual.

**Accessories**



IP68 Connector





AYERS  
One Opening 180



Mini AYERS  
One Opening 180

Beam Options:



AYERS

BURIED GROUND WASHER

Specification

- Designed, Manufactured and Tested according to IEC 60598.
- High strength cast aluminium and extruded aluminium housing.
- Stainless steel screws.
- Nano Ceramic surface conversion.
- Double layer coating.
- Safety glass cover.
- Post-cured silicone gasket.
- High quality LED module.
- Available with integrated driver or remote driver.
- GFR PA6.6 terminal block.
- Pre-wired cable from the factory.
- Installation must be carried out according to the enclosed product manual.

Accessories



CC Driver



IP68 Connector

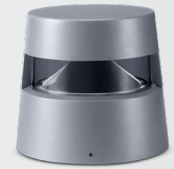


BUZZ

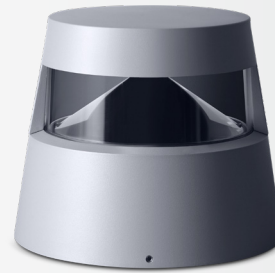
GROUND WASHER

Specification

- Designed, Manufactured and tested according to IEC 60598.
- LM6 Die Cast Aluminium body.
- Stainless steel screws.
- Nano Ceramic surface conversion.
- Double layer coating.
- Polycarbonate protective cover.
- Post-cured silicone gasket.
- High quality LED module and driver.
- Pre-wired cable from the factory.
- Installation must be carried out according to the enclosed product manual.



Mini BUZZ4  
Ground Washer



BUZZ4  
Ground Washer

Beam Options:



Accessories



Anchor bolt



IP68 Connector



HEXAHEDRON

PUBLIC SEATING LUMINAIRE

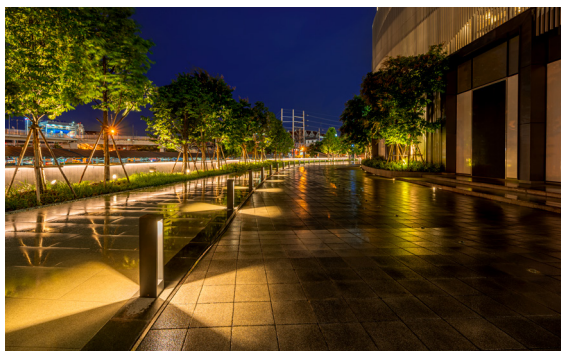
Specification

- Designed, Manufactured and tested according to IEC 60598.
- High strength aluminium structure.
- Stainless steel screws.
- Nano Ceramic surface conversion.
- Double layer coating.
- Safety glass cover.
- Post-cured silicone gasket.
- High quality LED module.
- Pre-wired cable from the factory.
- Installation must be carried out according to the enclosed product manual.





## ■ Application Reference







## CONTACT US

Unilamp Co.,Ltd.

[unilamp@unilamp.co.th](mailto:unilamp@unilamp.co.th)  
[www.unilamp.co.th](http://www.unilamp.co.th)

### THAILAND

#### Sale office and showroom:

461 Ramintra Road, Kannayao,  
Bangkok 10230 Thailand  
Tel: +66(0)2 943 2420-1, +66(0)2 946 4170-1  
Fax: +66(0)2 943 2419

#### Purchasing office and warehouse:

2519 Ladprao 79, Ladprao Road,  
Wangthonglang, Bangkok 10310 Thailand  
Tel: +66(0)2 539 8588, +66(0)81 935 4726

#### Engineering office:

2519 Ladprao 79, Ladprao Road,  
Wangthonglang, Bangkok 10310 Thailand  
Tel: +66(0)84 427 7235

#### Machining and coating factory:

25 Moo 11 Tambol Bansang,  
Amper Bansang, Prachinburi 25150 Thailand  
Tel: +66(0)85 133 5904

#### Assembly factory:

29 Moo 3 Tambol Bansang,  
Amper Bansang, Prachinburi 25150 Thailand  
Tel: +66(0)89 900 5904

### MIDDLE EAST

#### Sale support office:

Sharjah Airport International Freezone,  
Sharjah, United Arab Emirates  
Contact Person: Mr. Shakhir Azam  
Tel: +971 50 7654183  
E-mail : [shakhir@unilamp.co.th](mailto:shakhir@unilamp.co.th)  
Contact Person: Mr. Samar Qadar (for Specification)  
Tel: +971 50 9178493  
E-mail : [samar\\_q@unilamp.co.th](mailto:samar_q@unilamp.co.th)

### INDIA, SRI LANKA, BANGLADESH, PAKISTAN, MALDIVES, NEPAL, BHUTAN

#### Sale support office:

A-31/S-1 [Block A],  
Dilshard Garden, Delhi 110095  
Contact Person: Mr. Deepanshu Biswas  
Tel: +91 9871135550  
E-mail : [deepanshu\\_b@unilamp.co.th](mailto:deepanshu_b@unilamp.co.th)

### NORWAY

#### Associate Company:

UNILAMP NORDEN AS  
INDUSTRIVEIEN 11 1481 HAGAN, NORWAY  
Tel: +47 67 49 47 70  
Tel: +47 22 32 50 22  
Website : <https://www.unilamp.no>

### INDONESIA

#### Sale support office:

Grand Slipi Tower Lt. 9, Unit G, Jl. Letjen,  
S.Parmar Kav. 22-24, Palmerah, Jakarta Barat,  
Indonesia 11480  
Contact Person: Mr. Doddy Prijambodov  
Tel: +62 818 931 496  
E-mail : [doddy\\_p@unilamp.co.th](mailto:doddy_p@unilamp.co.th)

### PHILIPPINES

#### Sale support office:

353 M.L. Quezon St. Lower Bicutan Taguig City, Philippines  
Contact Person: Ms. Sherwin Sajul  
Tel: +63 916 445 7515  
E-mail : [sherwin@unilamp.co.th](mailto:sherwin@unilamp.co.th)



  
[www.unilamp.co.th](http://www.unilamp.co.th)



  
[@Unilamp](https://line.me/@Unilamp)



  
[UnilampThailand](https://www.facebook.com/UnilampThailand)



  
[unilamp.thailand](https://www.instagram.com/unilamp.thailand)



  
[unilamp](https://www.linkedin.com/company/unilamp)



  
[Unilamp Thailand](https://www.youtube.com/UnilampThailand)



  
[UnilampLighting](https://twitter.com/UnilampLighting)

DUE TO THE CONSTANCY OF PRODUCT DEVELOPMENT,  
WE RESERVE THE RIGHT TO ALTER ALL SPECIFICATION  
WITHOUT PRIOR NOTICE.

PLEASE CHECK PRODUCT AVAILABILITY AND UPDATES  
ON OUR WEBSITE OR SALES REPRESENTATIVE.

Last update on 07/04/2023