



Product Portfolio 2023/24

www.traxon-ecue.com



TRAXON | ecue

MEMBER OF PROSPERITY GROUP

Content

	About	4
<hr/>		
TRAXON	Traxon Product Tiers	6
	Accent	8
	Linear	10
	Washer	12
	High Power Flood	15
	Media Dots	16
	Media Tubes	19
	Media Flexible	22
	Sport Lighting Solutions	24
<hr/>		
e:cue	e:cue	28
	LIGHTDRIVE WiFi+	30
	Sympholight	32
	Symphocity	34
	System	36
	Server	38
	SYMPL Interfaces	40
	Genius	42
	Converter, DMX Output, Dimmer, User Terminals	44
	Sympholight Gateway's	46
	e:cue Academy	47
	DALI	48
	e:cue Technical Data	50
<hr/>		
	Sustainability Initiatives	54



About

Traxon (based in Hong Kong) together with its light management platform brand, e:cue (based in Paderborn, Germany), is a global leader in dynamic lighting.

Your Light. Our Passion.

Traxon e:cue is a global leader in dynamic lighting and control systems. We provide innovative, performance-driven, and intelligent lighting solutions. With an expansive portfolio, our solutions allow lighting designers to elevate architecture, entertainment, hospitality, and retail environments, worldwide. At Traxon e:cue, we possess a unique strength in our team and experience, allowing us to specialize in the complete solution to deliver unforgettable multidimensional, dynamic lighting and control installations. With a portfolio of projects spanning the globe, as well as a continued focus on developing the next generations of lighting and control solutions, we are committed to our partners and customer base to turn creative visions into bold, beautiful lighting experiences.

e:cue provides all the necessary tools to orchestrate any kind of project, from controlling a single room installation up to managing an entire city-wide lighting infrastructure using one central platform. We are looking forward to be with you through your lighting journey.



My mission is to expand our existing capabilities and gear the brand to become a global leader in manufacturing innovative lighting systems that seamlessly blend into the architectural structure of a project, while using state-of-the-art technologies that beautify large-scale areas and cater to a more sustainable, efficient use of resources.

Jack Chong
CEO



OUR MISSION

Delivering sustainable beauty through light.

OUR VISION

Illuminating a world of new possibilities.

Introducing our product tiers

Thoughtfully designed to cater to your unique requirements, featuring a diverse range of performance options and budgets to suit every project.

TRAXON Pro^{*}

Design, Performance and Innovation that is unsurpassed in Architectural Lighting.

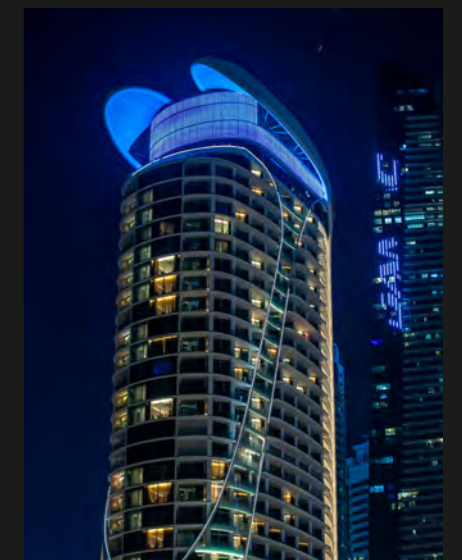
TRAXON Plus⁺

The benchmark for Dynamic Architectural Lighting Solutions.

TRAXON Go[→]

Essential features and performance for Architectural Projects.

Recent Projects

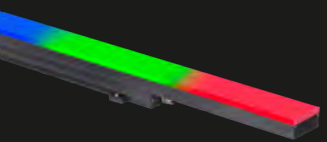


Accent



Product	Optic	Key Features
Cove Light AC HO RGBW HO-6 24 LED / 329lm: 304*39*50mm HO-12 48 LED / 619lm: 609*39*50mm HO-18 72 LED / 978lm: 913*39*50mm	120°	<ul style="list-style-type: none"> 4 channel DMX Control RGBW ±90° Tilt adjustment Multi pixel version available

3000K
230 VOLT AC
IP20
INDOOR
DMX 512



Product	Optic	Key Features
ProPoint Kontour Flat 300mm / 600mm / 1200mm 2400mm Narrow: 46.5*59.5mm*L Wide: 75*66mm*L	120° Diffused flat lens	<ul style="list-style-type: none"> Long daisy chain connectivity DMX controllable in 300mm sections or per luminaire Factory customisable pixel pitch IK08 (Narrow) or IK07 (Wide) / ANSI C136.31 / 3G Vibration Rating Available in three different housing finishes: grey, white, black

RGB
RGBW 4000K
3000K
4000K
120-277 VOLT AC
IP66
COAST
1 MOQ
DMX 512 RDM



Product	Optic	Key Features
ProPoint Kontour Round 300mm / 600mm / 1200mm 2400mm Narrow: 47.4*69mm*L Wide: 75*89.4mm*L	100°*125° Diffused round lens	<ul style="list-style-type: none"> Long daisy chain connectivity DMX controllable in 300mm sections or per luminaire Factory customisable pixel pitch IK08 (Narrow) or IK07 (Wide) / ANSI C136.31 / 3G Vibration Rating Available in three different housing finishes: grey, white, black

RGB
RGBW 4000K
3000K
4000K
120-277 VOLT AC
IP66
COAST
1 MOQ
DMX 512 RDM

Accent



Product	Optic	Key Features
ProPoint Pixel Flat: 146*80*120mm Diffused Dome: 146*123*120mm Diffused Drum: 146*117*120mm Diffused Prism: 146*113*120mm	Flat Clear Flat Diff. Dome Drum Prism	<ul style="list-style-type: none"> 20W output up to 678 lumens Available in 3 standard finishes: Traxon grey, black, & white 5 optic choices

RGB
3000K
4000K
120-277 VOLT AC
IP66
COAST
1 MOQ
DMX 512 RDM



Product	Optic	Key Features
ProPoint Scence Small: 153*122*106mm (9W) Medium: 191*123*105mm (15W) Large: 237*145*110mm (24W)	10° *5°	<ul style="list-style-type: none"> Available in 3 standard finishes: Traxon grey, black, white Available in 3 wattage outputs: 9W, 15W, 24W

RGB
3000K
4000K
120-277 VOLT AC
IP66
COAST
1 MOQ
DMX 512 RDM





Linear Go

Powerful and affordable

The Traxon Linear Go family of luminaires are used to distinguish facades, walls, and architectural landmarks with a powerful, even color wash effect. Linear Go's high-value design, features efficient electrical and optical systems, making it ideal for budget conscious projects.

Product

Linear Go
 320/600/900/1200mm
 Mini: L*30*77mm
 Midi: L*38*96mm
 Maxi DC: L*61*109mm
 Maxi AC: L*61*142mm

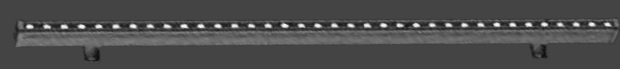
Key Features

- Four lengths
- Three power outputs
- DMX or ON/OFF
- Manual Addressing with the TX Smart Addresser
- Available with or without integrated glare shield
- Quick installation and reliable connection with self locking waterproof connectors

Beam Options

12° | 20° | 35° | 40° | 45°x35° | 55°x20° | 45°x20° | 30°x15° | 55°x15°

Note: Not all optics are available for all colour and power versions, please see the datasheets for more details



Mini (4.5W per 300mm)



Maxi DC (15W per 300mm)



Midi (8W per 300mm)



Maxi AC (15W per 300mm)

Linear



Product

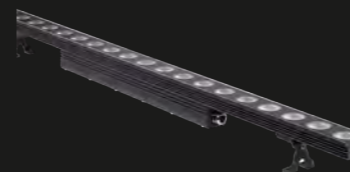
Allegro Linear 2.1
 300 12 LED: 320*50*86mm
 600 24 LED: 615*50*86mm
 900 36 LED: 915*50*86mm
 1200 48 LED: 1215*50*86mm

Optic

10° | 40° |
 60°*10°
 60°*30°

Key Features

- DynaMood® Technologies
- Active temperature monitoring
- Easy daisy-chain IN/OUT connectors
- DMX RDM
- 15W/300mm, 28W/600mm, 41W/900mm, 55W/1200mm



ProPoint Linear

300: 300*58*90mm
 1200: 1200*58*90mm

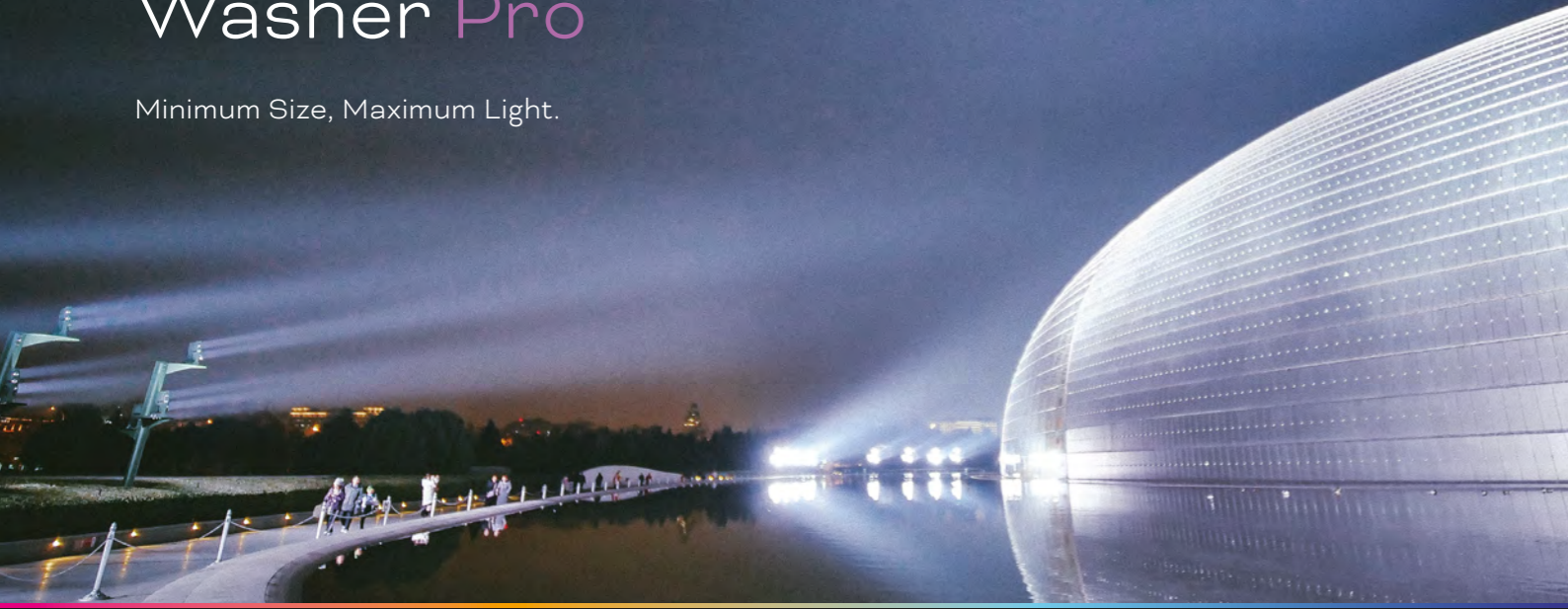
15° | 25° | 35°
 50°*30°

- Two output powers: SO - standard output 8W/300mm, HO - high output 12W/300mm
- Mixed at source LED cluster
- RGBW 2.0 with increased lumen output
- DMX RDM



Washer Pro

Minimum Size, Maximum Light.

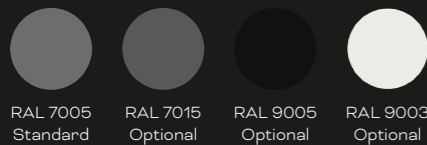


The Traxon Washer Pro is a state-of-the-art family of architectural Washers designed with sustainability at its core. With the smallest footprint, using less raw materials, fewer LEDs and delivering more light from less power! Our unique sculpted housing is designed to shed dirt, pollution and water and includes the option to add fully integrated accessories without compromising the design aesthetic. With our 4in1 RGBW LED engine you can expect whiter whites and more saturated colours.

Colour Options



Finish Options



Beam Options

8° | 10° | 15° | 20° | 30° | 45° | 60° SL | 60°x10° SL

Key Features

- DMX RDM controlled
- IP 66 coastal rated
- IK10
- DynaMood® Dynamic Boost
- Five sizes

Certifications & Approbations

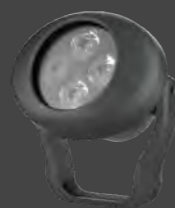
CE | ETL



Nano 10W



Micro 30W



Mini 60W



Midi 100W



Maxi 150W

Washer



Product

Washer Pro

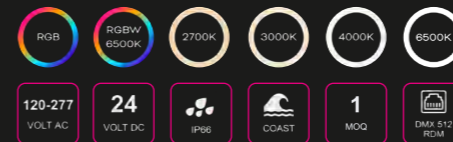
Nano 98*141*113mm
 Micro 158*232*164mm
 Mini 230*256*164mm
 Midi 262*316*202mm
 Maxi 315*375*312mm

Optic

8° | 10° | 15° | 20° | 30°
 45° | 60° (Spread Lens)
 60°*10° (Spread Lens)

Key Features

- Find detailed features on page 12!

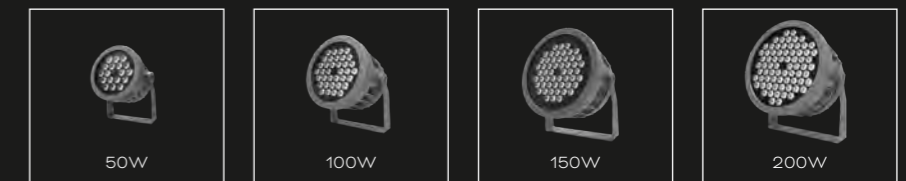
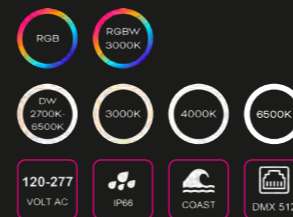


Allegro Washer 2.0

50W: 235*317*203mm
 100W: 310*395*252mm
 150W: 392*476*264mm
 200W: 392*476*264mm

10° | 60°*30° | 60°*10°
 55° | 80° (Spread Lens)

- DynaMood® Technologies
- Active temperature monitoring
- RDM for full control
- 5° native optic for long throw applications
- Easy daisy-chain IN/OUT connectors

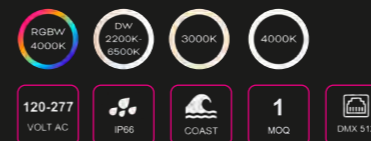


ProPoint Washer

20W: 161*130*197mm
 40W: 222*165*254mm
 80W: 257*220*330mm
 120W: 315*288*433mm
 180W: 315*288*433mm

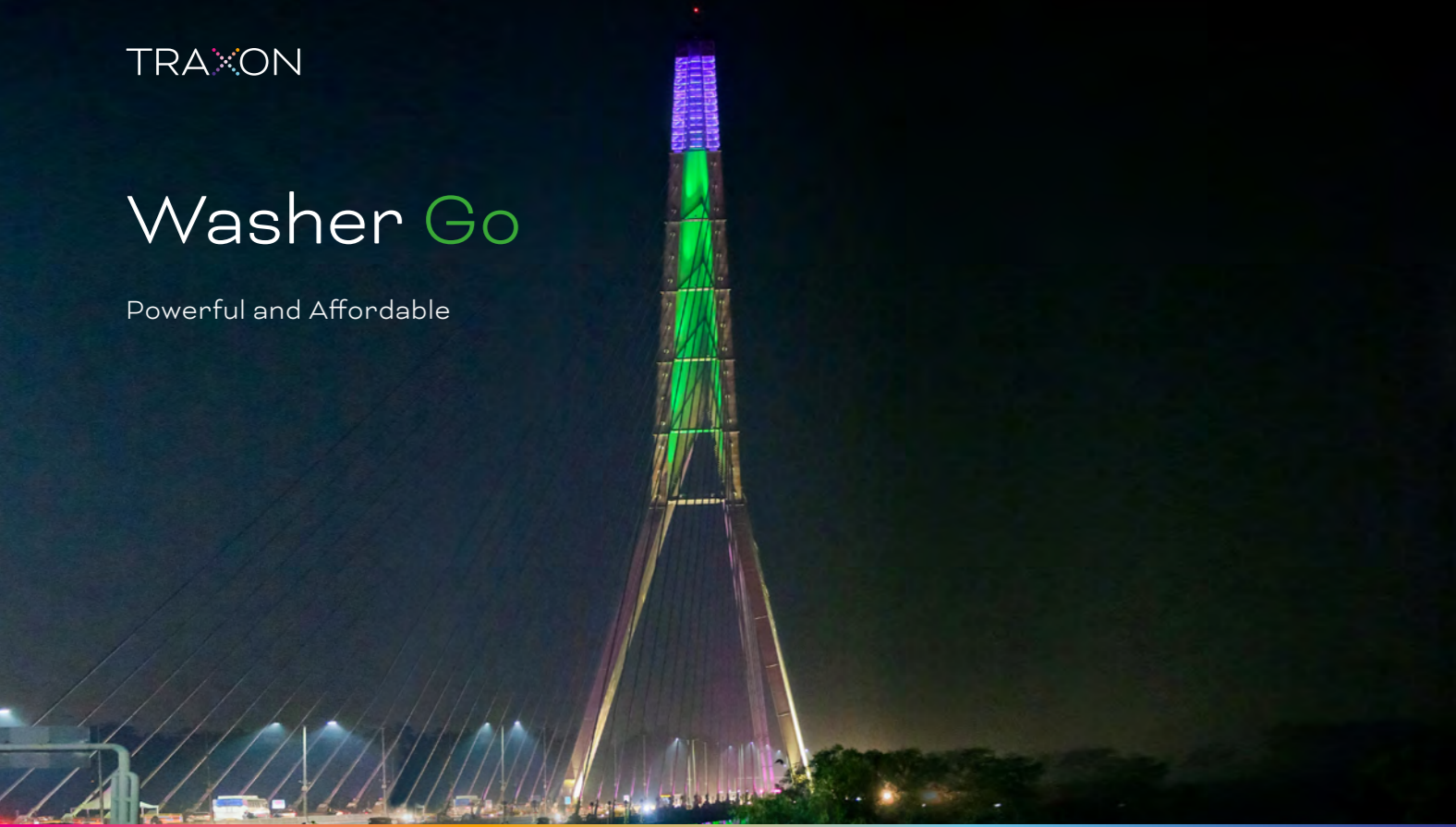
8° | 15° | 25° | 35°

- Long daisy chain connectivity
- Available in 3 standard finishes grey, black & white
- Optics provide superior glare control/glare cut-off



Washer Go

Powerful and Affordable



The Traxon Washer Go is an easy, affordable way to wash walls, buildings, monuments - anywhere you can imagine! Washer Go's high-value design features efficient electrical and optical systems, and with high efficiency 56lm/W for RGBW you can expect a powerful, colourful wash effect.

Product

Washer Go

- Micro 185*180*118mm
- Mini 219*253*215mm
- Midi 269*303*251mm
- Maxi 308*349*292mm

Key Features

- DMX RDM Controlled
- Flexible Mounting capability
- IK 07
- ANSI 3G Vibration Rating
- Four sizes Micro/Mini/Midi/Maxi
- Efficacy up to 56lm/W
- Premium OSRAM emitters
- Robust housing design with high IP and IK Ratings

Beam Options

12° | 25° | 30° | 45° | 60° | 55°x20°

Certifications & Approbations

CE | ETL

High Power Flood



Product

Vista Plus 100

- 1x100W: 649*286.8*144mm
- 2x100W: 686*483*144mm
- 3x100W: 694*710*144mm

Optic

3° (Standard) | 5° | 8° | 10°
15° | 20° | 30° | 40° | 55°
80° | 50°*5° | 50°*10°
Via field installed Spread Lens

Key Features

- Available in a native 3° optic
- Available in 3 standard finishes: Traxon grey, black, & white
- Optional accessories include: full glare shield, half glare shield, rock guard and pole mounts
- 11 Light shaping optics are available via a field installable spread lens module

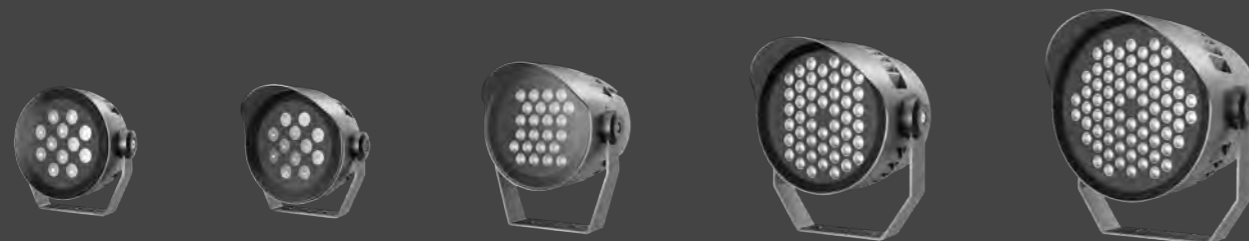


Vista Plus 200

- 1x200W: 680*352*174mm
- 2x200W: 738*634*174mm

3° (Standard) | 5° | 8° | 10°
15° | 20° | 30° | 40° | 55°
80° | 50°*5° | 50°*10°
Via field installed Spread Lens

- Available in a native 3° optic
- Available in 3 standard finishes: Traxon grey, black, & white
- Optional accessories include: full glare shield, half glare shield, rock guard and pole mounts
- 11 Light shaping optics are available via a field installable spread lens module



Micro 25W

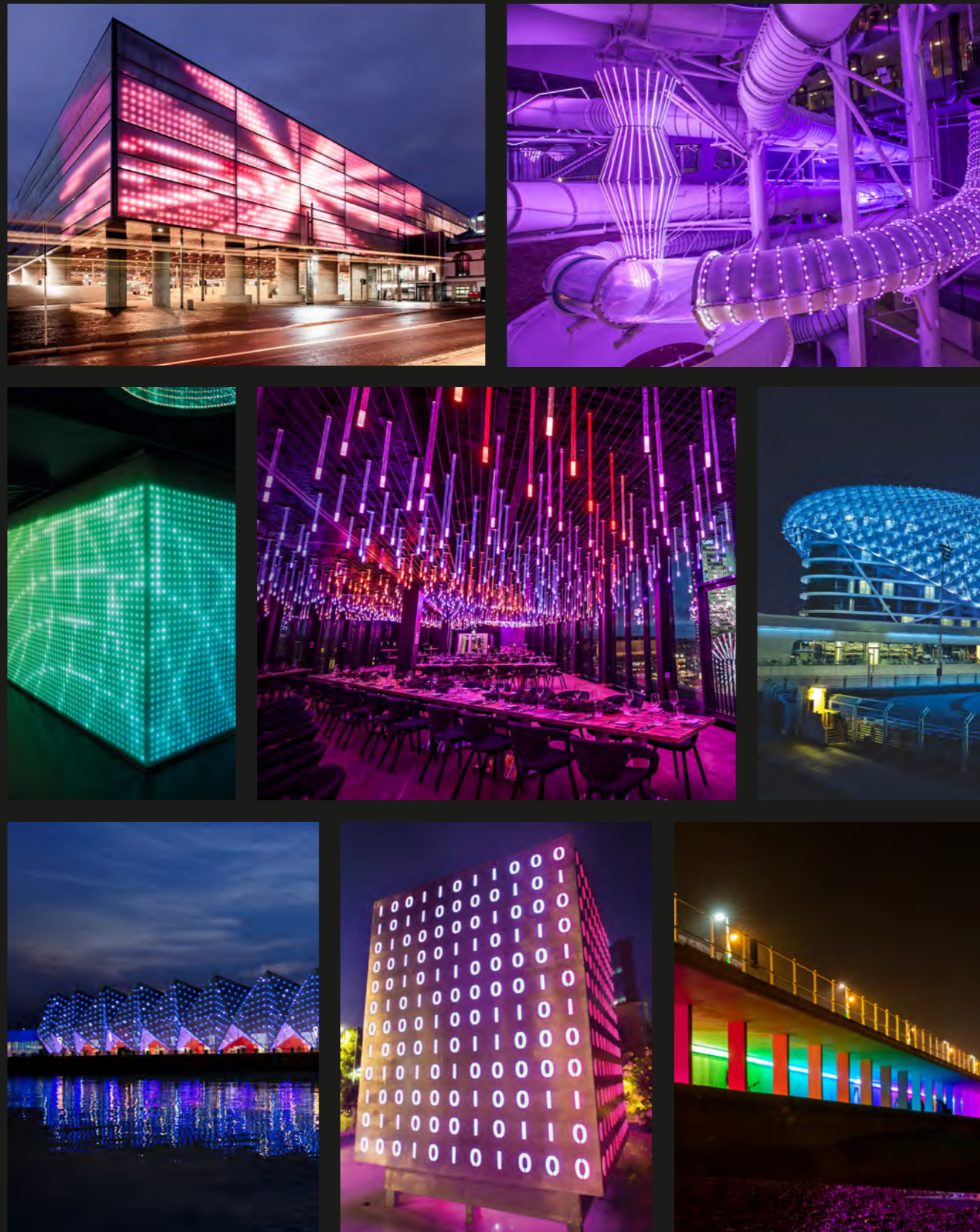
Micro 25W GS

Mini 50W GS

Midi 100W GS

Maxi 150W GS

Media Dot Applications



Media Dots



Product

Optic

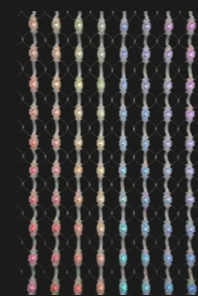
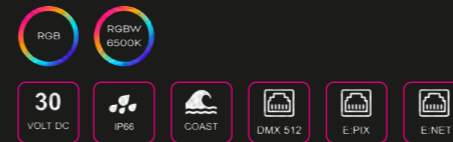
Key Features

Allegro Dot

- S Direct View: Ø53*42*18mm
- S Diffused Dome: Ø53*42*27mm
- M Direct View: Ø60*68*17mm
- M Diffused Dome: Ø60*68*39mm
- L Direct View: Ø60*68*17mm
- L Diffused Dome: Ø60*68*39mm

- 100°
- 135°
- 110°
- 150°
- 110°
- 150°

- Variable pixel pitch and number of dots per string
- Up to 4m pixel pitch
- Maximum 80 dots per string
- Two different versions: clear or diffused
- Auto addressing
- Easy installation and maintenance
- Real-time status and temperature information via RDM

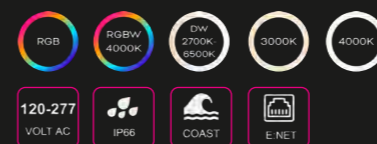


Allegro Dot XS

- Direct View: 15.6*41*10.6mm
- Diffused Dome: 15.6*41*20.7mm

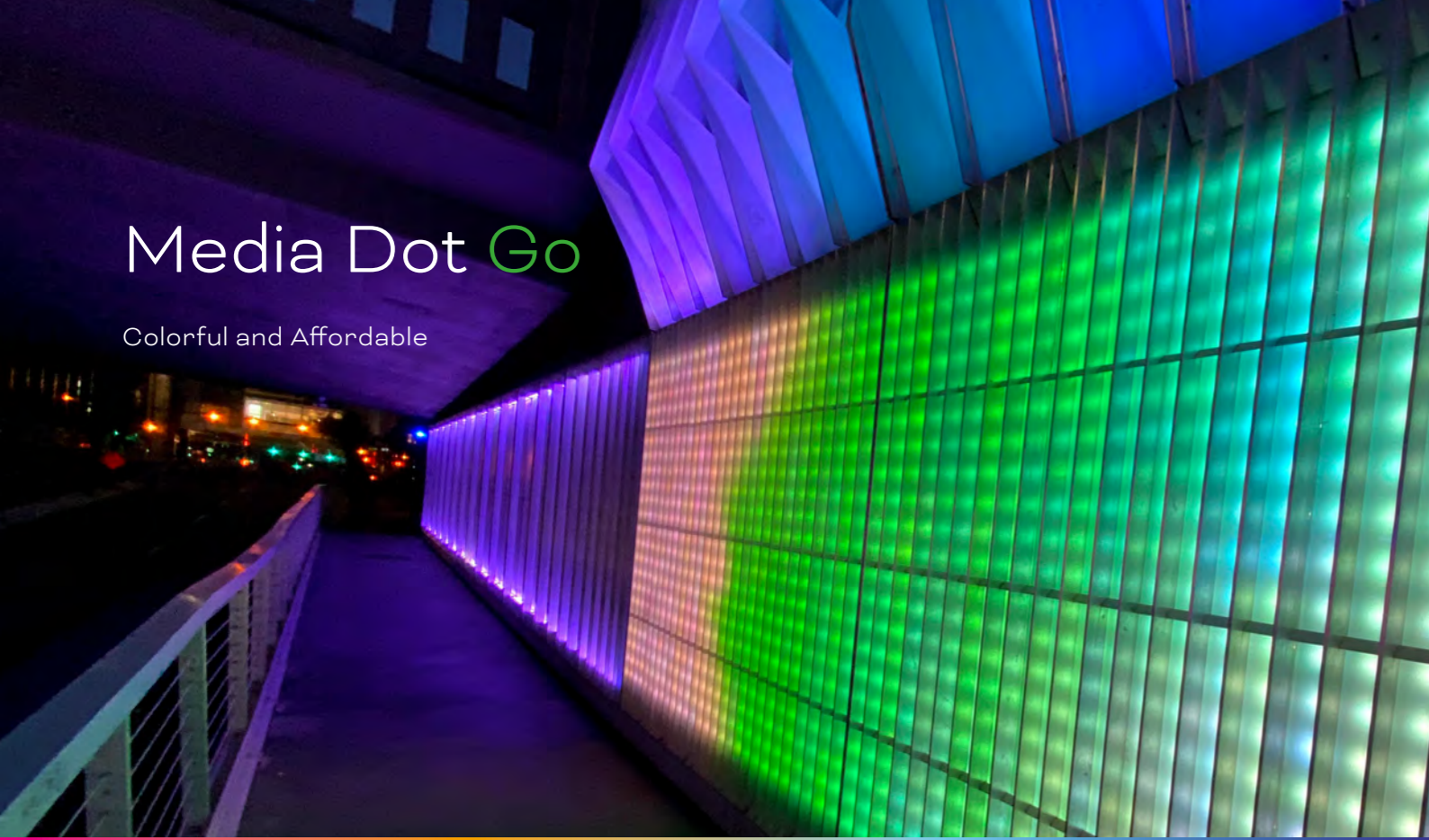
- 115°
- 175°

- Four mounting options, Mesh Grid, Vertical Wire, Din Rail, Surface
- Up to 640 pixels per system
- Up to 80 pixels per string
- e:net controlled using the Pixel Distributor Pro (PDP-8)
- Variable pixel pitch and number of dots per string



Media Dot Go

Colorful and Affordable



Media Dot Go is an easy, affordable way to create pixel controlled full-color effects on walls, buildings, monuments—anywhere you can imagine. Long strings of individually controlled Dots produce bright color-changing effects, messages, or even video! 3 dot sizes mean you control the impact: long-distance viewing, creating a digital sign, or backlighting a wall can be done indoors or outdoors. Mounting ease & flexibility is guaranteed, whether directly to surface by screws, cable ties, clips or with Traxon's Mesh Mounting System.

Product

Media Dot Go

- S Direct View 44.7*34.1*13.5mm
- S Diffused Dome 44.7*34.1*22.3mm
- M Direct View 53.1*43.7*14.5mm
- M Diffused Dome 53.1*43.7*29.5mm
- L Direct View 63.1*54*14.5mm
- L Diffused Dome 63.1*54*29.9mm

Custom Options

Pixel Pitch, Number of dots per string

RGB

RGBW
6500K

DW
2700K
6500K

12
VOLTS DC

24
VOLT DC

IP66

COAST

DMX 512

Key Features

- DMX controlled
- Flexible mounting capability
- Three sizes S / M / L

Color versions

White standard, grey (on request), black on request)

Certifications & Approbations

CE | ETL

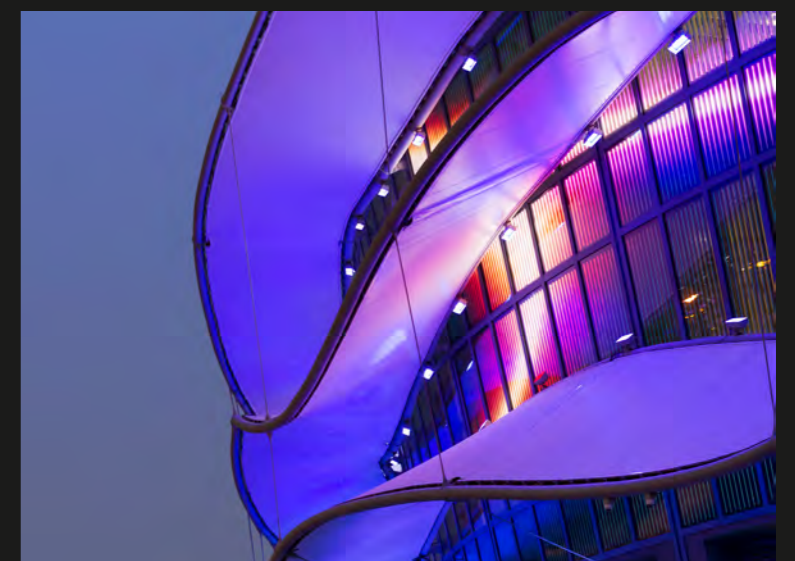
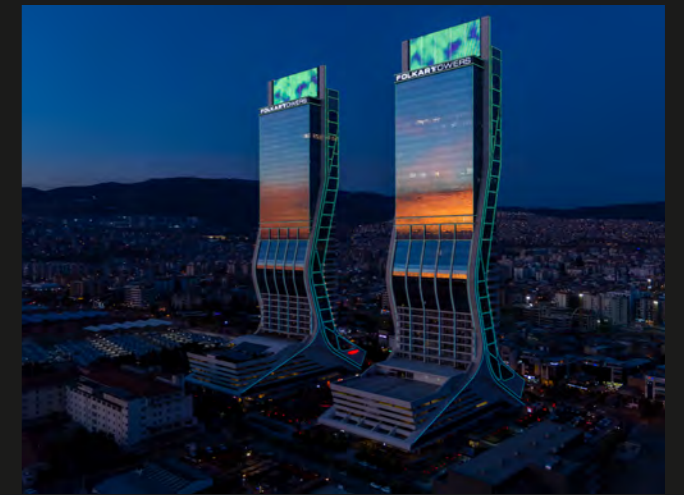
Lens Options

Clear Lens 110°, Diffused Dome 160°



S Direct View S Diffused Dome M Direct View M Diffused Dome L Direct View L Diffused Dome

Media Tube Applications



Media Tube Plus

Create Vibrant and Dynamic Content with our Newest and Brightest Media Façade Solution.

Key Features

- Full color RGBW (6500K) & RGB for precise color changing effects
- Designed with long run lengths in mind
- Configurable control segments for flexible installation
- Controlled via DMX512 and e:pix
- 33.3mm pixel pitch
- 4.5W per 300mm RGBW
- IP66 and suitable for coastal environments
- IK09 (diffused) or IK06 (clear) impact ratings
- ANSI C136.31 / 3G vibration rating
- Input voltage: 48V DC
- Max connection chain 17m RGBW, 22.6m RGB tubes

Color Options

Full color RGB, full color RGB + 6500K white

Length Options

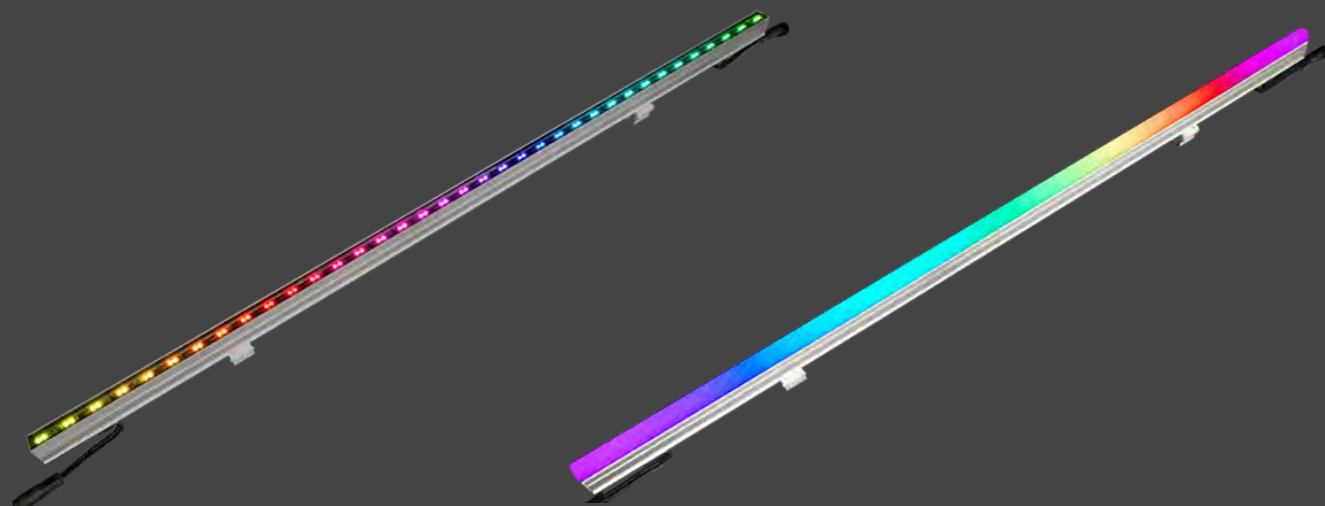
296mm | 596mm | 896mm | 1196mm | 1496mm

Lens Options

120° Direct View | 100°*125° Diffused Dome

Finish Options

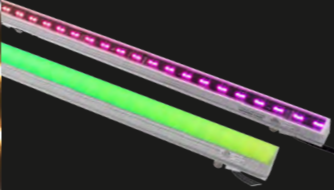
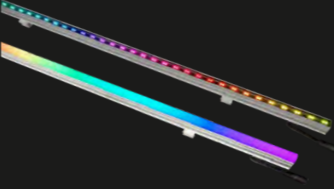
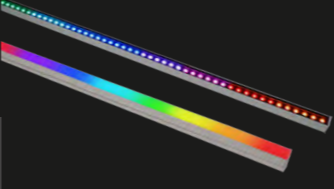
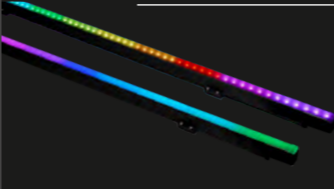
Sliver



Media Tube Plus Direct View

Media Tube Plus Diffused Dome

Media Tubes

Product	Optic	Key Features
 <p>Media Tube HO RGB/W 12PXL: 296*23*36mm 24PXL: 596*23*36mm 36PXL: 896*23*36mm 48PXL: 1196*23*36mm 60PXL: 1496*23*36mm</p> <p>RGB, RGBW 6500K</p> <p>48 VOLT DC, IP66, COAST, DMX 512, E-PIX</p>	Direct View 110° Diffused Dome 175°	<ul style="list-style-type: none"> · 25mm pixel pitch / 25mm LED pitch · Customisable pixel pitch (consult sales for more information) · Constant colour regardless of audience's viewing angle and orientation · +White intelligent algorithm, control RGBW pixels with 3 channels · Daisy chain topology
 <p>Media Tube Plus 9PXL 296*63*24.5mm 18PXL 596*63*24.5mm 27PXL 896*63*24.5mm 36PXL 1196*63*24.5mm 45PXL 1496*63*24.5mm</p> <p>RGBW 6500K</p> <p>48 VOLT DC, IP66, COAST, DMX 512, E-PIX</p>	Direct View 110° Diffused Dome 180°	<ul style="list-style-type: none"> · 33mm pixel pitch / 33mm LED pitch · 17m chain · Customisable pixel pitch (consult sales for more information)
 <p>Allegro Media Tube Lite Direct View 3PXL 300*24*26mm 5PXL 500*24*26mm 10PXL 1000*24*26mm 13PXL 1300*24*26mm Diffused Dome 3PXL 300*24*40mm 5PXL 500*24*40mm 10PXL 1000*24*40mm 13PXL 1300*24*40mm</p> <p>RGB, RGBW 6500K, DW 2700K, 8500K</p> <p>48 VOLT DC, IP66, DMX 512</p>	Direct View 110° Diffused Dome 175°	<ul style="list-style-type: none"> · 100mm pixel pitch / 16.7mm LED pitch · Slim profile 24mm and available in 3 different lengths · Long daisy chain 12m RGBW / 17m RGB/DW · DMX addressed with TX Smart Addresser
 <p>Media Tube Go 3PXL 370*56.5*25mm 10PXL 1210*56.5*25mm 20PXL 2410*56.5*25mm</p> <p>RGBW 6500K, DW 2200K, 4500K</p> <p>24 VOLT DC, IP66, COAST, DMX 512</p>	Direct View 120° Diffused Dome 110°*170°	<ul style="list-style-type: none"> · 121mm pixel pitch / 20mm LED Pitch · IK08 · DMX addressed with TX Smart Addresser · 5m chain

Media Flexible



Product

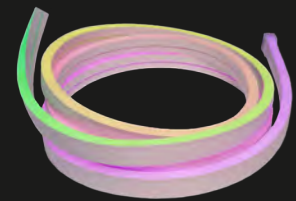
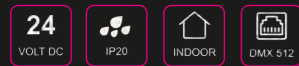
Media Pixel Ribbon Indoor
 RGBW 8000*12*2mm
 RGB 8000*12*2mm
 DW 10000*12*2mm
 White 1000*12*2mm

Optic

Direct View 120°

Key Features

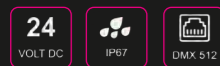
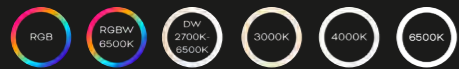
- CRI for white LED >80 CRI
- 10 pixels per meter
- 100mm pixel pitch
- Flexible media



Media Pixel Ribbon Outdoor
 RGBW 8000mm
 RGB 8000mm
 DW 10000mm
 White 10000mm

Flat Clear
 Flat Diffused
 Horizontal Bend
 Vertical Bend

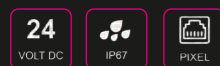
- 4 Options flat clear, flat diffused, horizontal bend and vertical bend
- 100mm pixel pitch
- Flexible media



ProPoint Kontour Rhythm
 RGBW 64PXL

115°

- Omni Bendable
- 76mm Pixel Pitch
- Customisable length
- Customisable cable input/output
- Customisable side/bottom/back cable entry
- CRI ≥ 90
- White LED SDCM 3



Sport Lighting Solutions



PURSOS SHP V3 FAMILY

General Edition



400W / 500W / 600W
Integrated Driver



800W / 1000W / 2000W
Integrated Driver



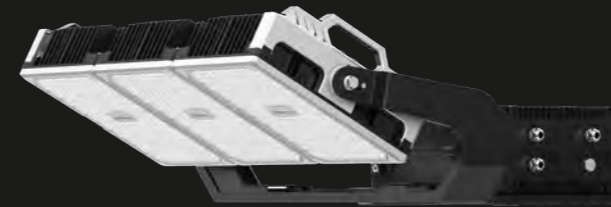
800W / 1000W / 2000W
Remote Driver



1500W / 1600W / 1800W
Remote Driver

Premium Edition

PURSOS SHP V3 PREMIUM EDITION



PURSOS® SHP V3.1 Flood Light Premium Edition is an innovative stadium lighting solution supporting the latest TV broadcasting standards. A well-designed forged pure aluminium heatsink offers a better heat dissipation efficiency but remaining a high light efficiency with up to 9 types of light distribution. The flexible electrical gear box design can be separately fixed in the appropriate position or be integrated into the bracket. It also provides DMX / RDM control interface and DALI and 0-10V dimming.

Advantages & Benefits

Support HDTV broadcasting standard

- Flicker free & choices of CRI 70, CRI 80, CRI 90
- Variety lighting distributions
- Additional visors for better glare control
- Compact size and light weight
- Special effects and light shows

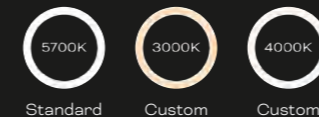
High reliability

- General Edition L70-50000 @Ta30°C
- Premium Edition L80-50000 @Ta30°C
- Robust aluminum body
- High protection level IP66 & IK10
- Independent surge protector

Intelligent control

- General Edition > On/OFF
- Premium Edition > DMX RDM, DALI-2
- Provide lighting control with e:cue light management system

Colour Options



Housing

Aluminium with carbon steel bracket

Beam Options

UNB 9° | NB 15° | MB 30° | UWB 60°
ASY 132° x 16°

Dimensions

L 488mm x H 312mm x W 800mm
Weight 30kg

Control

DMX RDM / DALI

Power

220-400V AC

Environmental

IP66 | IK10



Central Station
Chemnitz, Germany

Your Light. Our passion.

Intelligent Light Management Systems for Dynamic, Media and General Lighting Control.



COLORFUL ILLUMINATION CONTROL



SCALABLE AND RELIABLE

Scalable from a single room installation up to managing entire city-wide lighting infrastructure using one central platform.



DYNAMIC MEDIA

GENERAL LIGHTING



EXPERIENCE

For more than 20 years ecue stands for trust, experience and customer loyalty like no other brand.

During all project phases we offer consulting, trainings and technical support. If needed, we develop customized products such as software features or hardware adjustments tailored for your project.

GLOBAL NETWORK OF PARTNERS

Together with our global distribution and partner network we master any challenging lighting control project.

LIGHTDRIVE+ WiFi

The Stylish All-rounder for Small to Medium-sized Projects



PRODUCT HIGHLIGHTS

- Easy and fast commission via app (free of charge)
- All control features combined in a single device
- For monochrome, dynamic white, RGB and RGBW fixtures
- Two DMX outputs, divided in 3 zones
- 8 scenes in each of the 3 predefined zones
- Integrated scheduler for time trigger
- Pre-defined FX effects
- Integrated proximity sensor
- 2 low-side switches and 2 dry inputs for integration into 3rd party systems

The new **LIGHTDRIVE+ WiFi** standalone DMX controller with its integrated wireless connectivity and app management lifts the control of small to medium sized projects on a completely new level.



FEATURES & BENEFITS



Standalone wall mount DMX controller



Parent-Child-Mode (Device sync over Ethernet)



White



Built-in scheduler



2x dry contacts
2x low-side switches



Dynamic White



Connection via WiFi



2x DMX 512, 2nd universe divided into 2 zones



RGB



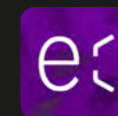
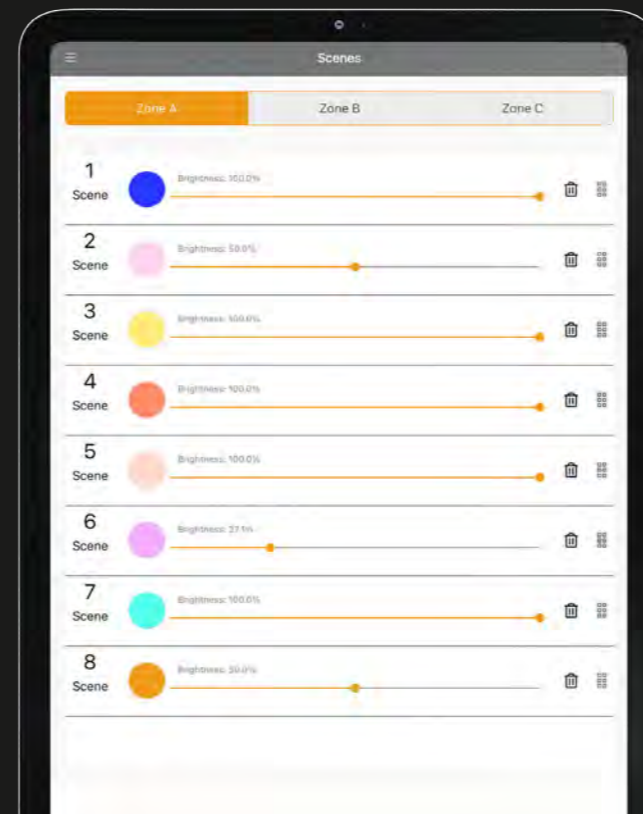
Commissioning via app



Built-in FX effects



RGBW



LIGHTDRIVE+ WiFi APP

· Commissioning only

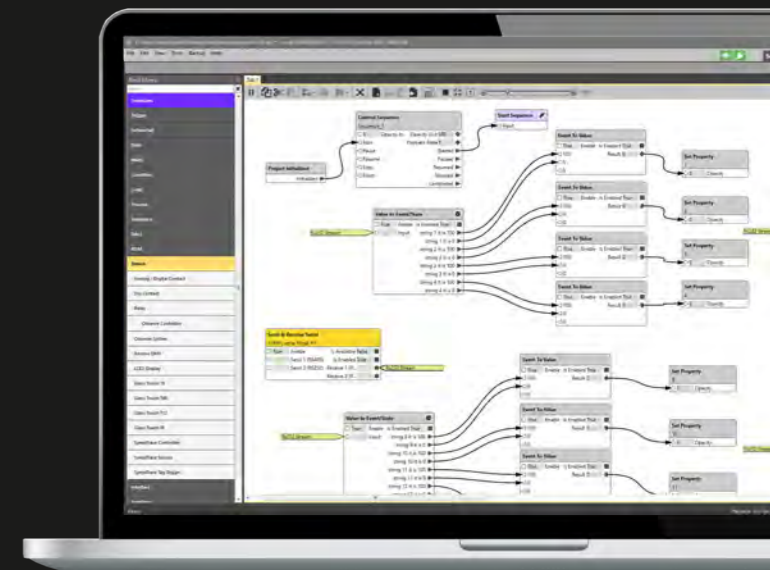


Sympholight

The Ultimate Solution to Manage and Control any Type of Lighting Project.



The visual programming in the Workflow Designer allows infinite possibilities to create intelligent logical systems. It is the most efficient way to connect everything to anything. The API opens a standard way to communicate with third party systems. Networking via an API allows the 3rd party system to start, stop, monitor changes, display warnings, or make changes to the content in one or more instances, among many other things.



Scalable from small to big



Endless interfacing options



One Software fits all

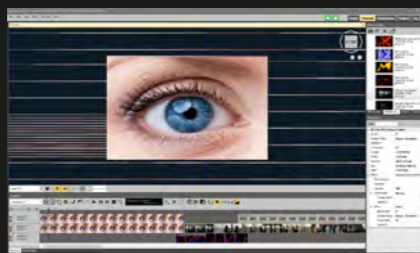
e:cue **Sympholight** is a software that offers flexible and scalable solutions for various project requirements. Traxon e:cue combines many years of experience in lighting control with the latest technology and extensive design possibilities. **Sympholight** simplifies the programming and handling of lighting applications for designers, system integrators and end users.

COLORFUL ILLUMINATION CTRL.



Select pre-built effects from the library or create your own powerful effects. Create stunning layered effects with multiple blend modes.

DYNAMIC MEDIA CONTROL



Drag & Drop, Fade in & out, create cues and jump within trigger points. Create and manage content on the timeline.

GENERAL LIGHTING CONTROL



Easy handling of DALI, both DT6 and DT8. Single color, DW, RGB, RGBW. DALI version 2 devices (input devices and ballasts) are certainly supported as well!

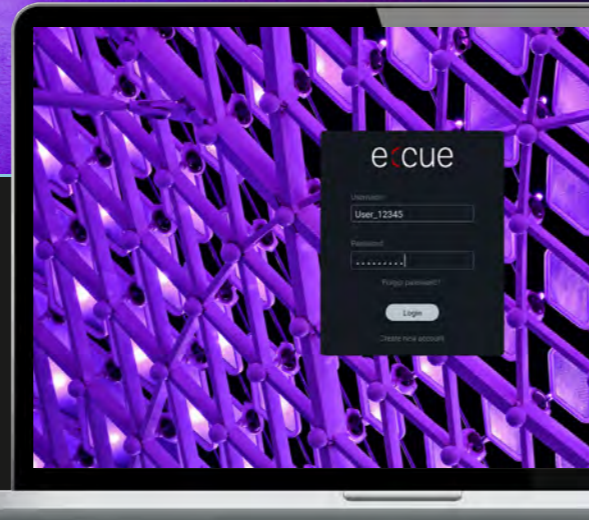
SUPPORTED PROTOCOLS & INTERFACES

DMX512	RDM	E-Mail	e:net	e:pix	IR
HTTP(s)	REST	Analog/Digital	Relais	KNX	MQTT
DALI	RDMnet	PIXEL (SPI)	Art-Net	Modbus	e:bus
RS485	RS232	DALI-2	sACN	UDP	BACnet



Symphocity

The Web-based Platform for Simple Remote Access to your Sympholight Project.



Symphocity provides a comprehensive platform, that gives you control and monitoring capabilities across all your lighting systems and their lighting infrastructure. The Status Overview system allows facility managers to gain access to an intuitive overview of the performance and status of the city lighting infrastructure. This allows predictive maintenance before problems occur. The show must go on, and you are in control!



No cloud and safe in your IT infrastructure. No subscription.

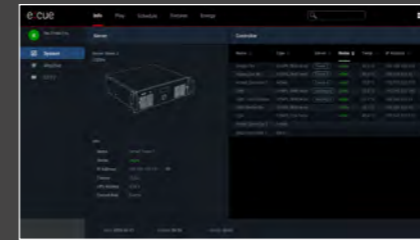


Customized interfaces. Simply in the browser.

- Maintenance team
- Building owner
- Marketing

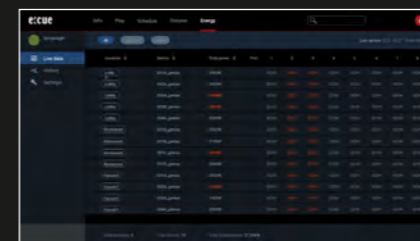


Manage one or multiple sites with different access levels. No permanent connection required.



SYSTEM & CONTROLLER

- Manage Sympholight systems
- Observe connected output devices
- Direct access to various webUIs



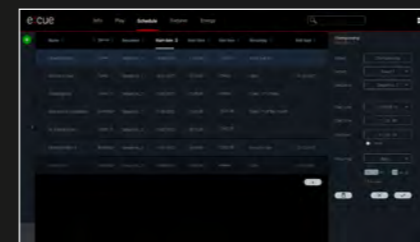
FIXTURE OVERVIEW

- Monitor (RDM) fixture status
- Detect damaged fixtures
- Detect irregularities



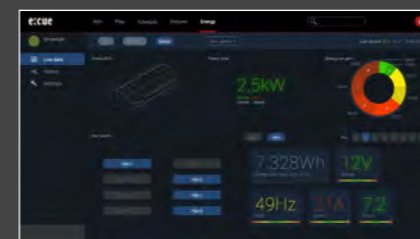
CONTENT MANAGEMENT

- Direct access to all light sequences
- Stop All and Grandmaster functionality
- Central control of multiple Sympholights
- Direct access to colors and effects



SCHEDULE CONTENT

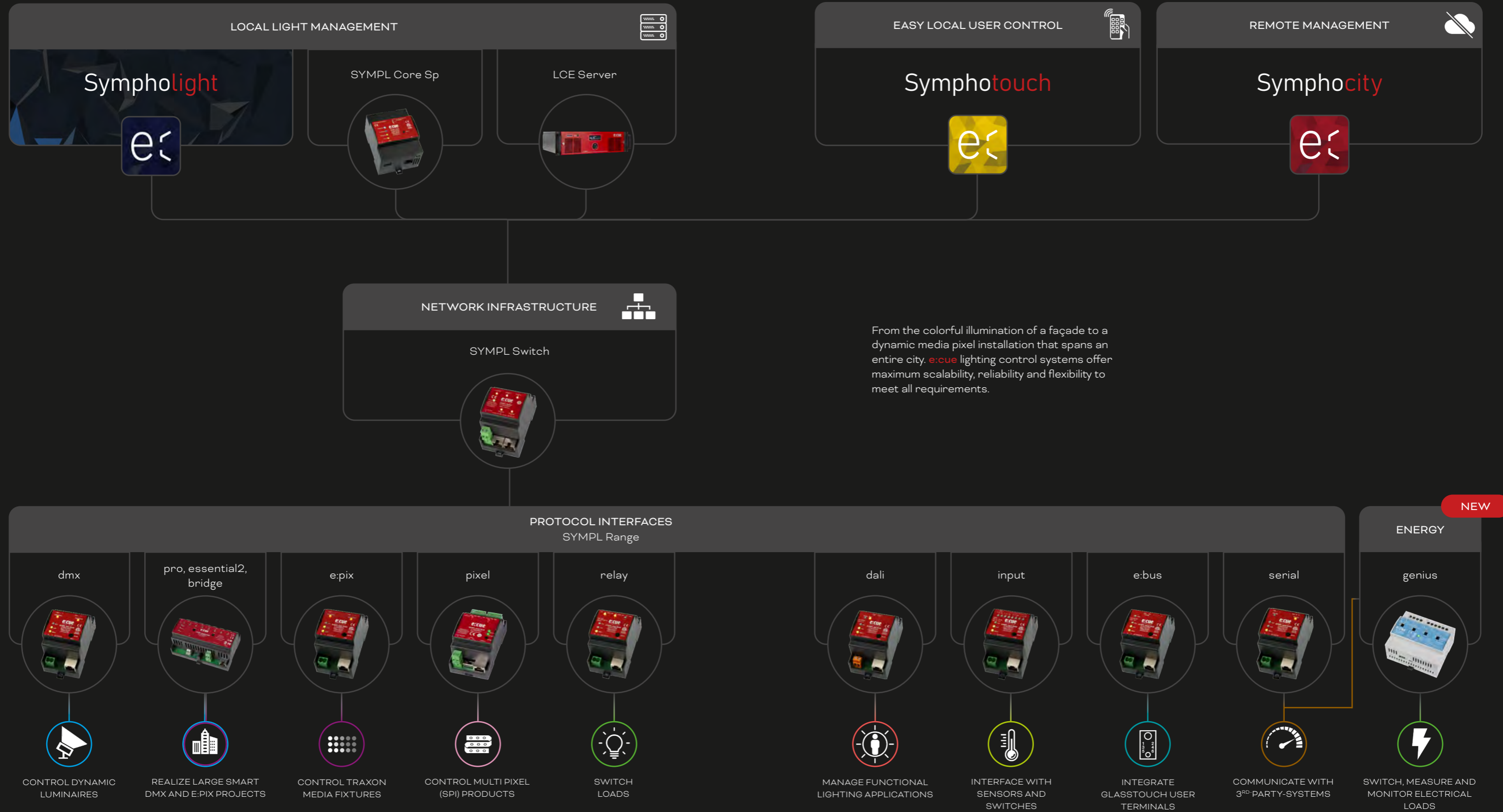
- Schedule start and end-date of content
- Support for single and multi-site projects
- One-time or recurring events



GENIUS ENERGY MANAGEMENT

- Energy data live or compare with historical data
- Electricity management, measure and compare
- Detect irregularities

System






Server

Perfectly Harmonized Hardware Makes our Software a Highly Reliable Solution. Our Servers Guarantee the Perfect Mix of Performance and Reliability. Warranty Period of 5 Years!

NEW



		Max. Pixel ¹⁾	Max. DALI Devices ¹⁾
	SYMPL Core Sp AM430280035	5.000	256 Ballasts 64 DALI groups (virtual) 42 DALI buttons 42 PIR motion sensors 42 Light sensors
	Lighting Control Engine 3 mx AS086160055	50.000	512 Ballasts 64 DALI groups (virtual) 84 DALI buttons 84 PIR motion sensors 84 Light sensors
	Lighting Control Engine 3 fx AM368100135	3.000.000	3072 Ballasts 128 DALI groups (virtual) 168 DALI buttons 168 PIR motion sensors 168 Light sensors



High-class components



Reliability for 24/7 operation



Certified and 5 years warranty



Optimized for the e:cue system

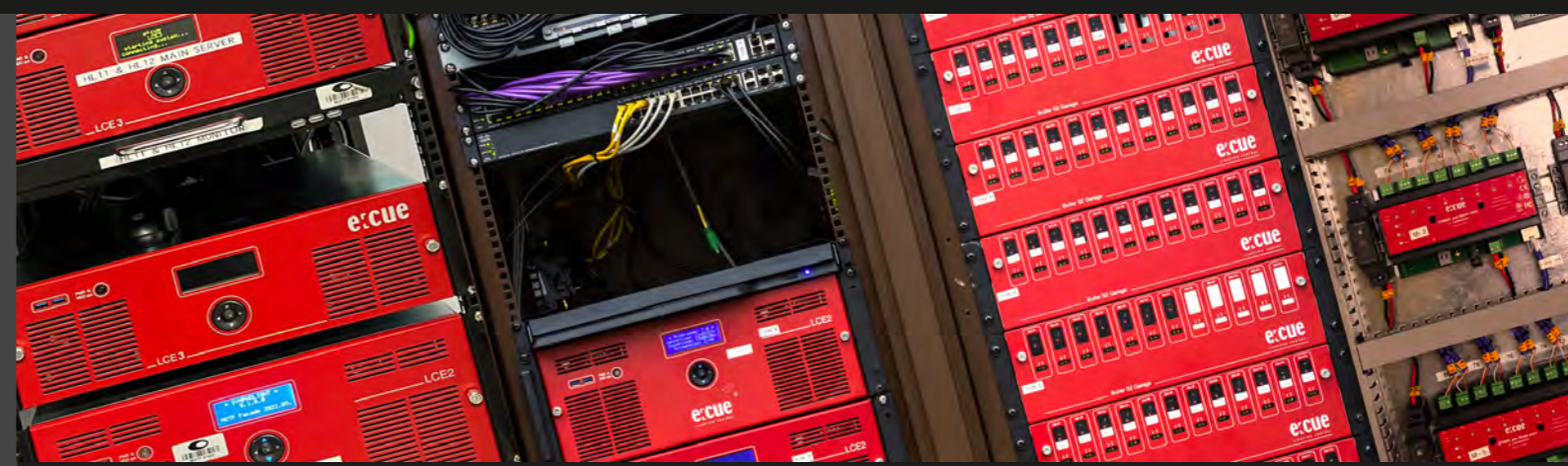


Our systems are provided with Sympholight and LAS licenses by default. These can be upgraded via credits to include open DMX protocols such as Art-Net & sACN per universe. Additional features like single Symphocity boards can be easily upgraded via feature licenses.



E:CUE POWERFUL SERVER

Probably one of the most important elements in every project and consequently requires special focus. Our Lighting Control Engines are high performance servers with Sympholight and the Lighting Application Suite (LAS) pre-installed, designed to control small to large and complex projects, 24 hours a day, 365 days a year, without interruption. As the central control units, servers orchestrate all devices and interfaces within a project, providing maximum band width to cover all project requirements - of course flexible and fully scalable.



¹⁾ Based on project measurements with either DALI or DMX fixtures, not mixed (e.g. 5000 RGB pixel OR 256 DALI ballast). A medium complex Sympholight workflow layout with rare real time calculations (e.g. sensor measurement data) utilizing e:cue output devices like SYMPL or Butler range. Max 2 running video sequences in parallel. Note: High complex show files with many parallel running sequences/cue lists and complex workflows, triggers, logic and scripting scenarios may reduce the quantity of output channel and devices. Please contact your e:cue partner for more details and additional server configurations. We are happy to assist you in choosing the best solution for your project.



SYMPL Interfaces

Nothing is Left to Chance! Our Interfaces are Designed to Operate Reliably and Smoothly, Suitable for all Common Engineering and Project Requirements.



All common lighting protocols



24/7 in tough environment



5 years warranty



Easy to commission



NEW

The new **SYMPL essential2 Node** smart DMX controller for state-of-the-art lighting control projects has been specifically designed with tough outdoor environments in mind.

PRODUCT HIGHLIGHTS

- 8 ports DMX512/FastDMX
- High operating temperature: -30 ... 60 °C
- Surge protection (DMX side)
- Isolated DMX outputs
- Test mode via button and web interface
- DMX chip support e.g. UCS, SUNMOON and many more

	Protocol	Ports	Channels	Applications
SYMPL dmx AB444180035	DMX/RDM	2	1024	Control any type of DMX512 or RDM based luminaire
SYMPL e:pix AB443930035	e:pix	2	4096	Control all Traxon e:pix based luminaires
SYMPL pixel AM390290035	asynchronous & synchronous	2	4096	Control multi pixel (SPI) products, e.g. LED Tapes etc.
SYMPL dali AB444230035	DALI	1	64	Control and interact with DALI Devices
SYMPL input AB444200035	analog & digital	8		Interfacing with analogue inputs or digital I/O's
SYMPL serial AB444220035	RS232 & RS485	1		Communicate with 3 rd party systems
SYMPL relay AB444190035		3		Load switching
SYMPL e:bus AB444210035	e:bus	1	8	integrate GlassTouch user terminals
SYMPL Switch AM313830035	Ethernet	5		Distribute e:net or other ethernet bases signals

	Protocol	Ports	Channels	Applications
SYMPL pro AM255360031 (DMX) AM305690031 (e:pix)	DMX512/RDM or e:pix	8	4096 / 16384	For use in extreme environments with surge protection & isolated outputs
SYMPL essential2 AM466930031	DMX or FastDMX	8	4096 / 8192	Featuring fast support for fast DMX chips such as UCS, SUNMOON etc.
SYMPL bridge AM356970031	DMX or e:pix	8	4096 / 16384	Converts e:net, Art-Net, sACN to DMX512 or e:pix

- Flexible mounting onto 35mm DIN rails or vertical surfaces
- Simple and easy integration into e:cue Sympholight
- Separate web interface for configuration
- Integrated Test mode
- See page 50-53 for all technical details

- Flexible mounting onto 35mm DIN rails or vertical surfaces
- Simple and easy integration into e:cue Sympholight
- Separate web interface for configuration
- Integrated Test mode
- See page 50-53 for all technical details



Genius

Our New Multifunctional Solution for Load Switching, Energy Monitoring and Power Measuring Combined in a Single Device.



Genius 4 Channel

PRODUCT HIGHLIGHTS

- Real-time energy monitoring of installations/objects
- Available with 4 and 8 channels
- Four or eight bistable relay outputs SPST each for up to 20 A resistive load @ 230 V AC
- Measured data: Voltage, current, power (active, apparent, reactive), power factor, energy (active), phase, line frequency, status
- Connectivity via Modbus RTU / ASCII
- Flexible mounting on 35 mm DIN rails or surfaces



Significantly **reduces energy** consumption. Energize your system only when needed and protect the equipment



Reduces downtime through fast fault detection - ensure that your project always looks its best



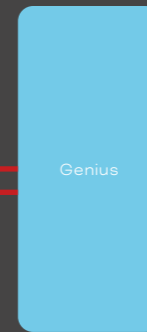
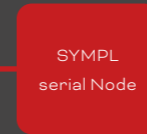
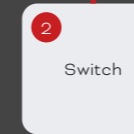
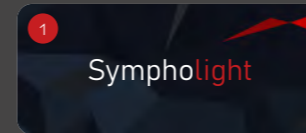
Prevention of failures through **early detection** increases safety and saves resources



Connected via **Modbus RTU**



Genius 8 Channel



- A) e:net (ethernet based protocol)
- B) RS-485 wiring (Modbus)
- C) 200 ... 230 V AC / 20 A (resistive)
- 1) Software, running on LCE server or SYMPL Core Sp
- 2) SYMPL Switch or other network switch
- 3) Multiple other SYMPL Node
- 4) Up to 32 Genius devices in Modbus daisy chain
- 5) Switch / measure load
- 6) Genius 4CH: 4 outputs in total, Genius 8CH: 8 outputs in total

CONNECT TO SYMPHOCITY

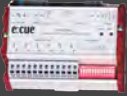

To unleash the full potential of the Genius devices, we recommend the use in combination with our Symphocity Dashboards. This combination allows everyone to easily and intuitively monitor energy consumption live or historically, as well as switch relays on or off. This functionality does not require the installation of an additional control server, but can be implemented on SYMPL Core Sp level using Sympholight's integrated web server and time series database.

Please see page 34 for more details.





Converter

Dimmer

		Protocol	Ports	Features
	DMX2DALI+ CL23100068435	DMX DALI	8	Coming soon
	Bridge8 AM356960031	ArtNet sACN DMX512	8	ArtNet/ sACN to DMX512 interface







		Dimming	Protocol	Features
	DMX2PWM 4CH AM467260055	PWM Constant voltage	DMX RDM	4 PWM output channels 12 ... 36V DC PWM frequency 0.5 ... 35kHz RDM functionality
	DMX2CC 4CH tba	Constant current	DMX RDM	Coming soon





DMX Output Devices

User Terminals

		Ports	Connectivity	Features
	Butler S2 AB436200031	2	Ethernet (e:net)	2 universes DMX/RDM Standalone Mode Cluster Mode
	Butler XT2 AA557270131	2	Ethernet (e:net) RS232 4 digital inputs e:bus for Glass Touches	Standalone mode Integrated RTC for advanced triggering 2 universes DMX/RDM e:bus interface for Glass Touch devices
	Butler Pro DMX: AA628600035 e:pix: AA628610035	16	Ethernet (e:net)	16 universes DMX/RDM/e:pix 19" rack mountable Integrated display and keypad
	Excite+ IC: AA557280031	1	USB	USB to DMX interface Works with Lighting Application Suite (LAS) Can be used as input or output device



		Layout	Interface	Features
	GlassTouch T6 AA439100138	2 x Dimm button 4 x Digit button (Scenes etc.) 1 x On/Off button	e:bus	6 Touch-sensitive keys One cable for power and data (e:bus) Wall mountable, compatible with standard flush type boxes
	GlassTouch T12 AA439070138	2 x Dimm button 10 x Digit button (Scenes etc.) 1 x On/Off button	e:bus	12 Touch-sensitive keys One cable for power and data (e:bus) Wall mountable, compatible with standard flush type boxes



Sympholight Gateways

Almost All Data from Sympholight Can Be Exchanged via BACnet/KNX



You are looking for options to connect the e:cue system with a building management system? Our Sympholight Gateways allow a seamless and easy integration or interfacing with BacNET or KNX systems.

The Gateways convert data from the lighting management system **Sympholight** into the building management system compliant format. Transfer e.g. movement and brightness information and process it smartly in the building management system.

- ICs Gateway BACnet: AM476230031 (25 data points), AM476240031 (500 data points), AM476250031 (2,500 data points)
- ICs Gateway KNX: AM476260031 (25 data points), AM476270031 (500 data points), AM476280031 (2,500 data points)

Academy

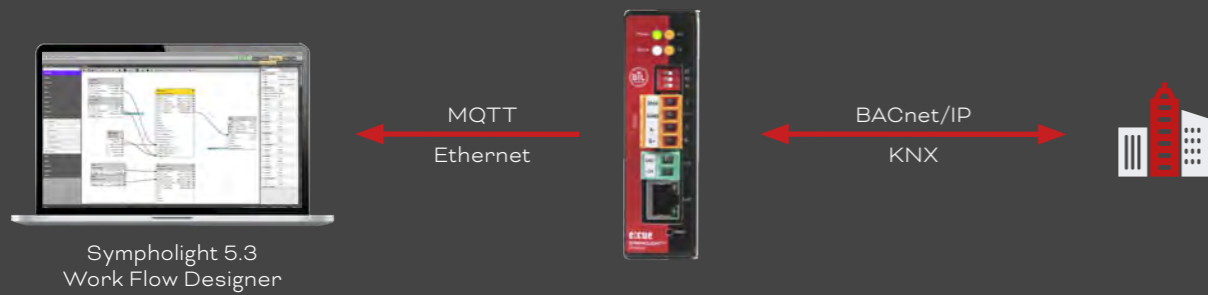
The Key to Successful Project Realization

Training plays a very important role at Traxon e:cue. No matter if you are a beginner or an advanced user, we offer regular software and product trainings. Step by step new users are familiarized to our system. After completion of the training you will be fully prepared and trained for future projects.

If interested just send us an email to trainings@ecue.com or scan the QR code below for further information and dates.



SYMPHOLIGHT CONNECTION



System status



Track energy consumption



Sequence control in Sympholight



Read and process sensor data



Change and access color values of fixtures



Access luminaire data and status informations



Access and change the brightness levels of fixtures



Support for Master & Backup systems

NEED HELP?

No matter where you are: Our international team of experts will support you to plan and realize your projects.



SUPPORT@ECUE.COM



DALI Lighting Control

Perfect Lighting in Any Situation



Sensing
Motion, brightness, humidity temperature and other environmental factors.



HCL
Increase productivity and well-being. Improve focus and concentration.



Swarm Control
Always the best lighting conditions around you.



Integrate Colors
Via DALI (DT-8) or any other dynamic lighting fixture controlled out of one single system.



Interfacing
We offer several ways to interact with 3rd-party devices, protocols or building management systems.



Schedule Light
Your desired lighting at the right time.



Save Energy
Smart time scheduling, daylight harvesting and occupancy control.



Always in Control
Real-time control of all parameters, changeable at any time. Users can create personalized control interfaces via app or web browser based on their needs.

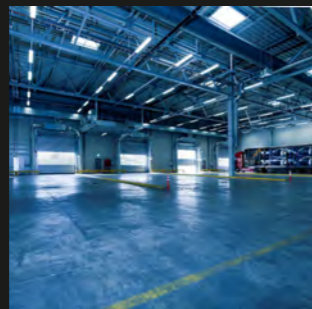
- **Flexibility**
Automation via Sympholight offers endless possibilities. One system fits all – no difference which type of lighting system needs to be controlled.
- **Scalability**
We provide lighting control solutions for anything: from a simple indoor office installation to the light management of an entire city.

- **Customizable**
Endless remote-control possibilities with a maximum of design freedom. Fader, buttons, text and any other control features can be customized and orchestrated in no time at all.

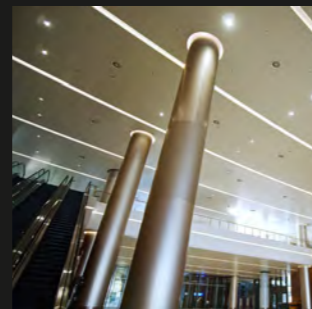
OFFICE



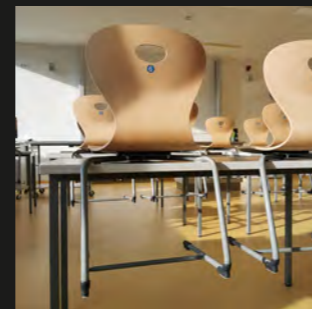
INDUSTRY



MUSEUM AND HOSPITALITY



EDUCATION



DALI PUSH BUTTON COUPLER

- DALI-2 control device that integrates existing push switches into DALI system
- 4 x DALI-2 push button instances are available for an easy integration
- Suitable for integration and in combination with DALI-2 compliant central control units
- Multimaster capable, multiple modules can be installed on the DALI line
- IC: AM466330055



Technical Data

Product	Key Features	Specs
SYMPL Core Sp Stand-alone engine for e:cue Sympholight with SYMPL Nodes functioning as interfaces IC Core Sp: AM430280035	<ul style="list-style-type: none"> • Sympholight engine for small to medium-sized projects • Connections to SYMPL Nodes via Ethernet (scalable) • Sympholight ActionPad as user interface utilizing all standard web browsers • MicroSD card for storage of show files and content • Power over Ethernet (only SYMPL Core Sp) • Web interface for configuration and monitoring 	Max. Performance Dynamic: <ul style="list-style-type: none"> • Up to 5.000 RGBW or RGB pixel with Sympholight Max. Performance DALI: <ul style="list-style-type: none"> • 256 ballasts • 64 DALI groups (virtual) • 42 DALI buttons
Lighting Control Engine 3 19" rack-mountable high performance control server for any demanding project guarantee uninterrupted operation IC: AM368100035	<ul style="list-style-type: none"> • Software licences for e:cue´s Sympholight and Programmer, pre-installed • High quality industrial components for reliable uninterrupted and efficient 24/7 operation • 2x SSD hard disk drive in RAID 1 operation for increased system stability • Integrated dry contact inputs (6x) and relay outputs (2x) • LC display and cursor keys for status messages • 19" rack-mountable (3U) 	Max. Performance Dynamic: <ul style="list-style-type: none"> • 3.000.000 RGBW or RGB Pixel with Sympholight • 10.000 RGBW or RGB Pixel with LAS Max. Performance DALI: <ul style="list-style-type: none"> • 3072 ballasts • 128 DALI groups • 168 DALI buttons • 168 Sensors
Lighting Control Engine 3 fx Similar to the Lighting Control Engine 3 but with extended real-time video manipulation tools IC: AM368100135	<ul style="list-style-type: none"> • Software licences for e:cue´s Sympholight and LAS, EmotionFX, pre-installed • High quality industrial components for reliable uninterrupted and efficient 24/7 operation • 2x SSD hard disk drive in RAID 1 operation for increased system stability • Integrated dry contact inputs (6x) and relay outputs (2x) • LC display and cursor keys for status messages • 19" rack-mountable (3U) • Integrated Video Capture Card 	Max. Performance Dynamic: <ul style="list-style-type: none"> • 3.000.000 RGBW or RGB Pixel with Sympholight • 10.000 RGBW or RGB Pixel with LAS Max. Performance DALI: <ul style="list-style-type: none"> • 3072 ballasts • 128 DALI groups • 168 DALI buttons • 168 Sensors
SYMPL Switch Ethernet switch for up to 5 devices with PoE IC: AM313830035	<ul style="list-style-type: none"> • 5 Ethernet ports • Power-over-Ethernet (PoE) for all ports when using 48V • Classic switch (without PoE) when using 24V 	<ul style="list-style-type: none"> • 5 x e:net 10/100 Mbit/s RJ45 • PoE ports mode B (PoE over spare wires) • According to IEEE802.3af • 53.5 x 90.5 x 62 mm, 80g
SYMPL pro Node Smart DMX/RDM or e:pix controller for state-of-the-art lighting control projects. Specifically designed with tough outdoor environments in mind IC DMX Version: AM255360031 IC e:pix Version: AM305690031	<ul style="list-style-type: none"> • 8 outputs for DMX512/RDM or e:pix (dependent on model) • Extended operating temperature (-40...70°C) • Isolated outputs up to 3.75kV • Integrated protection against surge • Embedded temperature & humidity sensors • Reverse polarity protection • Backup-mode on data loss • Power-over-Ethernet • Test mode access via button • Simple and easy integration in e:cue Sympholight or LAS 	<ul style="list-style-type: none"> • 1 x e:net 10/100 Mbit/s RJ45 • 8 x DMX512/RDM/e:pix via 3-pin terminal plugs • 143 x 92 x 62mm, 250g

Product	Key Features	Specs
SYMPL bridge Node 8 port e:net, sACN/Artnet to DMX interface grants full access to Traxon fixtures via the e:pix protocol through any 3 rd party controller utilizing Art-Net or sACN with up to 32 Universes IC: AM356970031	<ul style="list-style-type: none"> • 8 x DMX512 / e:pix outputs • Extended operating temperature (-40...70°C) • Isolated outputs up to 3.75kV • Supports up to 32 Art-Net / sACN universes via e:pix • Simple and easy integration in e:cue Sympholight • Switch instantly between two input sources (Sympholight, Art-Net, sACN) • Backup-mode on data loss (via Sympholight) • Integrated protection against surge • Reverse polarity protection • Power-over-Ethernet • sACN in unicast or multicast mode 	<ul style="list-style-type: none"> • 1 x 10/100 Mbit/s RJ45 for e:net / Art-Net / sACN • 8 x DMX512/e:pix, via 3-pin terminal plugs • 143 x 92 x 62mm, 250g
Butler Pro DMX/RDM or e:pix interface with 16 outputs in 19" format IC DMX: AA628600035 IC e:pix: AA628610035	<ul style="list-style-type: none"> • 16 outputs for DMX512/RDM or e:pix (dependent on model) • Stores stills in the unlikely event of loss of connection with the server • Controls up to 8,192 DMX512/RDM channels in 16 DMX 512/RDM universes (DMX512/RDM version) • Up to 32,768 e:pix channels in e:pix universes (e:pix version) • Highly flexible test options • 19" rack-mountable 	<ul style="list-style-type: none"> • 1 x 10/100 Mbit/s RJ45 for e:net • 16 DMX/RDM/e:pix ports via RJ45 • USITT DMX512-A • RDM ANSI E1.20 • 482 x 44 x 142mm, 1200g
Butler S2 2 port DMX output device with RDM. Stand-alone functionality (only content from LAS) IC: AB436200031	<ul style="list-style-type: none"> • Supports the RDM protocol for bidirectional communication • Saves and plays pre-programmed cuelists from LAS • Reliable, uninterrupted operation 	<ul style="list-style-type: none"> • 1 x 10/100 Mbit/s RJ45 for e:net • PoE • 2 x RJ45, USITT DMX512-A/RDM E1.20 • 71.5 x 24 x 85mm, 125g
Butler XT2 Advanced stand-alone controller for pre-programming from LAS IC: AA557270131	<ul style="list-style-type: none"> • Up to 8 independently controlled zones in stand-alone mode • Up to 1024 DMX512/RDM channels • RDM for for bidirectional communication • Real-time and astronomical clock with daylight saving options • Up to 16 systems (32 DMX512 universes) in stand-alone mode • Integrated web server, remote control via web browser or app • Supports a connection with up to eight Glass Touch User Terminals 	<ul style="list-style-type: none"> • 1 x 10/100 Mbit/s RJ45 for e:net • 1 x e:bus (clamp terminals) • 2 x DMX/RDM (RJ45, clamp terminals) • 1 x Inputs RS-232 (clamp terminals) • 8 optically isolated digital inputs • 177 x 60 x 75mm, 400g
Excite+ DMX input and output device for up to 512 DMX channels. LAS only. IC: AA557280031	<ul style="list-style-type: none"> • USB-DMX interface • 512 channel DMX output / input • Gender changer for XLR5-pin male/female included • Allows remote control of e:cue Programmer via external DMX signal 	<ul style="list-style-type: none"> • 1 x USB 2.0, standard plug to Neutrik, XLR5f • 200cm, 210g

Technical Data

Product	Key Features	Specs
SYMPL dmx Node 2 port DMX and RDM interface for the use with Sympholight or LAS IC: AB444180035	<ul style="list-style-type: none"> 2 x DMX512 outputs Both outputs support RDM Test mode via Button for simple commissioning DMX Snap Shot can be recorded with Sympholight and output in case of failure Web interface for configuration 	<ul style="list-style-type: none"> 1 x e:net 10/100 Mbit/s RJ45 2 x DMX512/RDM, individually isolated (1 kV) 3-pin terminal plug 53.5 x 90.5 x 62mm, 100g
SYMPL e:pix Node 2 port DMX and e:pix interface for the use with Sympholight IC: AB444210035	<ul style="list-style-type: none"> 2 x e:pix or DMX outputs Up to 4096 channels with e:pix Test mode via button Web interface for configuration 	<ul style="list-style-type: none"> 1 x e:net 10/100 Mbit/s RJ45 2 x e:pix, individually isolated (1 kV) 3-pin terminal plug 53.5 x 90.5 x 62mm, 100g
SYMPL dali Node DALI interface with integrated bus power supply for the use with Sympholight IC: AB444230035	<ul style="list-style-type: none"> One DALI line for the communication with ballast and sensors Supports the communication with DALI version 2 devices Web interface for configuration Test mode via button Emergency functionality in case of failure 	<ul style="list-style-type: none"> 1 x e:net 10/100 Mbit/s RJ45 1 x DALI line, conformal to EN 62368-101 53.5 x 90.5 x 62mm, 100g
SYMPL input Node 8 port analog input interface for the use with Sympholight IC: AB444200035	<ul style="list-style-type: none"> 8 analog inputs for 0 ... 10V 4 inputs switchable to 0 ... 20mA input Web interface for configuration 	<ul style="list-style-type: none"> 1 x e:net 10/100 Mbit/s RJ45 8 x analog inputs 0 ... 10V, 4 of them switchable to 0 ... 20mA 53.5 x 90.5 x 62mm, 100g
SYMPL serial Node RS-232 and the RS-485 interface for the use with Sympholight IC: AB444220035	<ul style="list-style-type: none"> Two serial interfaces , the RS-232 and the RS-485 Web interface for Configuration 	<ul style="list-style-type: none"> 1 x e:net 10/100 Mbit/s RJ45 2 x serial interfaces on 3-pin terminal plug 53.5 x 90.5 x 62mm, 100g
SYMPL relay Node 3 port relay output for the use with Sympholight IC: AB444190035	<ul style="list-style-type: none"> Three relay outputs SPDT for up to 5 A/250 V AC or 3 A/30 V DC" Simple integration of nonintelligent lighting fixtures into Sympholight Test mode via button Web interface for configuration 	<ul style="list-style-type: none"> 1 x e:net 10/100 Mbit/s RJ45 3 x SPDT relays, 3-pin terminal plug wire gauge: 0.21 ... 3.31 sqmm 53.5 x 90.5 x 62mm, 125g
SYMPL e:bus Node Interface for up to 8 wallmount touch devices (Glass Touch) and Sympholight IC: AB444210035	<ul style="list-style-type: none"> e:bus interface for up to 8 e:bus devices (Glass Touch) Web interface for configuration 	<ul style="list-style-type: none"> 1 x e:net 10/100 Mbit/s RJ45 1 x e:bus on 2-pin terminal plug 53.5 x 90.5 x 62mm, 100g
Bridge8 8 port sACN/Artnet to DMX interface specifically developed with tough outdoor environments in mind IC: AM356960031	<ul style="list-style-type: none"> 8 outputs for DMX512 Extended operating temperature -40° ... 70°C Isolated outputs up to 3.75kV Integrated protection against surge Reverse polarity protection Test mode access via button Web interface for status and configuration Switch instantly between two input sources sACN/Art-Net in unicast or multicast mode 	<ul style="list-style-type: none"> 1 x 10/100 Mbit/s RJ45 for sACN or Art-Net 8 x DMX512 on 3-pin terminal plug PoE (Power over Ethernet) 143 x 92 x 62mm, 259g

Product	Key Features	Specs
SYMPL pixel Node 2 port interface to control a wide range of asynchronous and synchronous (SPI) serial addressable LED pixel via Sympholight IC: AM390290035 IC 2x Pixel Range Extender: AM394020035	<ul style="list-style-type: none"> 2 x Output for pixel control with up to 2048 channel each Output a wide range of asynchronous and synchronous (SPI) protocols DMX output as well Can be powered via external PSU, PoE, directly from the connected fixture. Extended distance wiring via Pixel Range Extender (Accessory) Web interface for configuration Test mode via button for simple commissioning Supported: APA104_400, APA104_800, TM1804_400, TM1804_800, TM1812, UCS2903, UCS2904, UCS8903_16bit, UCS8904A_16 bit, WS2811_400, WS2811_800, WS2812, WS2812b, WS2813, WS2818, WS2801, APA102 / APA102c, DMX512 	<ul style="list-style-type: none"> 1 x e:net 10/100 Mbit/s RJ45 2 x 4pin terminal plug 53.5 x 90.5 x 62mm, 80g
Genius 4 or 8 port measuring and switching in a single Modbus device. Communication with Sympholight (via SYMPL serial Node) and any third party system is made via Modbus RTU IC 4CH: AM382130031 IC 8CH: AM382140031	<ul style="list-style-type: none"> 4 or 8 outputs up to 20A resistive load @ 250 V AC Bistable relay outputs SPST Switch and measure with +-3% tolerance Modbus RTU / ASCII Daisy chain up to 30 devices Measure: Voltage, current, power (active, apparent, reactive), power factor, energy (active), phase, line frequency 	<ul style="list-style-type: none"> 110V-250V 4 or 8 Relais 1 x Modbus RTU interface 4CH: 106.3 x 90.5 x 62mm, 320g 8CH: 213 x 90.5 x 62mm, 600g
Glass Touch T6 Sleek design with a glass surface, touch-sensitive keys for user interaction IC: AA439100138	<ul style="list-style-type: none"> Sensor keys with status LEDs One on-off sensor Simple mounting via flush-mounted box Ultra thin design Sleek white glass front Connects via free topology e:cue e:bus (2-wire power and data connection) 	<ul style="list-style-type: none"> 6 capacitive touch sensors 1 capacitive on/off sensor 80 x 80 x 11mm, 110g
Glass Touch T12 Sleek design with a glass surface, touch-sensitive keys for user interaction IC: AA439070138	<ul style="list-style-type: none"> Sensor keys with status LEDs One on-off sensor Simple mounting in standard with in-wall fittings Ultra thin design Sleek white glass front Connects via free topology e:cue e:bus (2-wire power and data connection) 	<ul style="list-style-type: none"> 12 capacitive touch sensors 1 capacitive on/off sensor 80 x 160 x 11mm, 210g
DMX2DALI+ DMX to DALI converter allows the integration of DALI fixtures in DMX controlled surroundings IC: CL23100068435	<ul style="list-style-type: none"> 8 DMX channels = 8 DALI outputs (broadcast) Up to 16 DALI ballasts per output Power and DMX status LEDs Manual and auto DMX addressing modes (DIP switches for configuration) User selectable number of DMX channels (1-8) Integrated power supply for each DALI output 	<ul style="list-style-type: none"> 1 x DMX512 in (spring terminal clamps) 1 x DMX512 out for daisy chain (spring terminal clamps) 8 x DALI (spring terminal clamps) Single 100 to 240 V AC supply voltage 88 x 90 x 63 mm, 300g

Sustainability Initiatives

At Traxon e:cue our passion for light extends to the sustainability of our products, services, and operations, to reduce or eliminate negative environmental and social impacts, and to identify opportunities to increase the positive contributions we bring to the world. Our pursuit of improved sustainable practice and operations is aligned under three main initiatives:

DO MORE WITH LESS



Solutions that provide more performance and use fewer resources, with industry-leading longevity are the most direct path to sustainable practice.

ENABLE CIRCULAR ECONOMIES



Circular Project Solutions ensure reliable and maintainable lighting, including end-of-life planning to reuse, refurbish, and recycle existing equipment to bring new life to old systems.

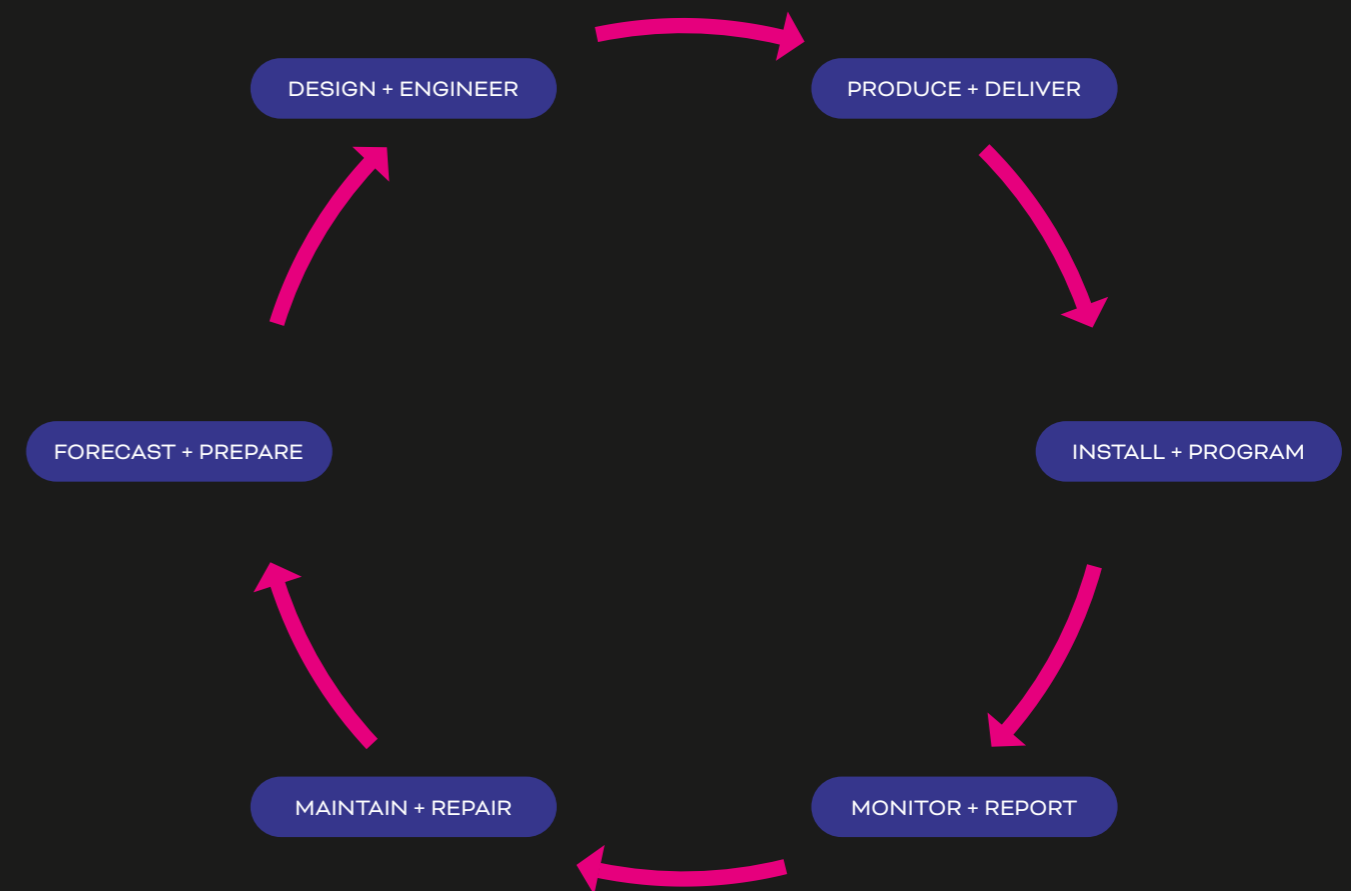
CREATE IMPACT FOR OUR PARTNERS



Networked fixtures and controls enable owners to monitor and manage and fine-tune their high-performance building systems for optimal efficiency.

Circular Project Solutions

Success of your project involves perpetual engagement with stakeholders to optimize sustainability, reduce lifecycle costs, verify performance, and ensure successful implementation at every project phase – from design, to installation, to operation, and eventual rejuvenation. Traxon e:cue is committed to partnering with you at every turn.



Each project has unique sustainability goals and reporting requirements. If you require specific documentation that you cannot find in this catalogue or on our website, please contact your local Traxon affiliate to discuss how we can work with you to meet the needs of your project.

How can we help you?

Technical Support

support@traxon-ecue.com

General Information

info.europe@traxon-ecue.com

Follow us on Social Media



Traxon Technologies Europe GmbH

Karl-Schurz-Straße 38
33100 Paderborn, Germany
Phone +49 5251 54648-0
Email info.europe@traxon-ecue.com

Specifications are subject to change without notice. Errors and omission excepted.

