



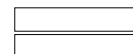
Cells

Design by Speirs + Major





Design by Speirs + Major



EN A range of exterior recessed or surface-mounted luminaires suitable for installation in ceilings or walls. These high performance luminaires blend in perfectly with the architectural context.

The advanced optics control system makes it possible to select options for general lighting or bespoke configurations and applications.

IT Una gamma di apparecchi da esterni declinata in versioni da incasso o superficie idonee per l'installazione a soffitto o a parete, in grado di fornire performance eccellenti e di integrarsi perfettamente nel contesto architettonico. L'avanzato sistema di controllo del fascio consente di scegliere tra soluzioni per l'illuminazione generale o per specifiche applicazioni.

www.reggiani.net

Overview





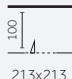



Application:	Recessed, Surface
Light source:	LED ARRAY
Watt:	13 W - 18 W
Kelvin:	3000 K, 4000 K
Lumen:	1631 lm - 2300 lm
CRI:	>80
SDCM:	<3
IP:	66
IK:	10
Control options:	On/Off, Phase-cut, Dimm 1-10V, DALI, Emergency
Technologies:	Bluetooth

Available for North America: visit www.reggianiusa.com/
Disponibile per Nord America: visita www.reggianiusa.com

#theilluminationcollective



Versions/ Versioni											
Recessed p.945											
Surface p.955											
Diffusers/ Diffusori											
Finishes/ Finiture											
Plates											
Cells Surface Body											
Cells Recessed Trim											
Beams/ Fasce											
	Narrow/ Stretto	Medium/ Medio	Wide/ Largo	Very wide/ Molto largo	Rectangular/ Rettangolare	Asymmetric/ Asimmetrico	Double asymmetric/ Doppio asimmetrico				

Sizes and tech. specifications/ Misure e info tecniche		
	Transparent diffuser	Opal diffuser
Cells Recessed Flush/A filo p.945	 <p>Visible trim 232x232mm p.948</p>	 <p>Visible trim 232x232mm p.949</p>
Cells Recessed Drop/Esposto p.945	 <p>Visible trim 232x232mm p.950</p>	 <p>Visible trim 232x232mm p.951</p>
Max recess depth/ ingombro interno massimo	 <p>100 213x213</p>	 <p>100 213x213</p>
Cells Surface p.955	 <p>Visible trim 201x201mm p.960</p>	 <p>Visible trim 201x201mm p.961</p>
Beam width/ Apertura cono di luce	9°, 24°, 55°, 68°, Rectangular Asymmetric, Double asymmetric	81°
Light source/ Sorgente luminosa	<p>LED ARRAY 13 W, 18 W 1631 lm-2300 lm L70 B50=50,000h 3000K, 4000K SDCM <3 CRI >80</p> <p>Emergency 3h LED ARRAY 13 W, 18 W 1631 lm-2300 lm L70 B50=50,000h 3000K, 4000K SDCM <3 CRI >80</p>	<p>LED ARRAY 13 W, 18 W 1631 lm-2300 lm L70 B50=50,000h 3000K, 4000K SDCM <3 CRI >80</p> <p>Emergency 3h LED ARRAY 13 W, 18 W 1631 lm-2300 lm L70 B50=50,000h 3000K, 4000K SDCM <3 CRI >80</p>

Accessories/
Accessori

Cells
Recessed



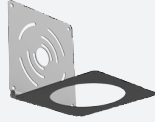
Housing/
Cassaforme

Cells
Surface



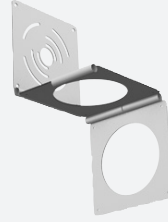
Connector/
Connettore

- 48
- 08
- 28
- 98



90° adjustable bracket/
Staffa per orientamento 90°

- 48
- 08
- 28
- 98



90° two axis adjustable bracket/
Staffa per doppio orientamento 90°

- 48
- 08
- 28
- 98

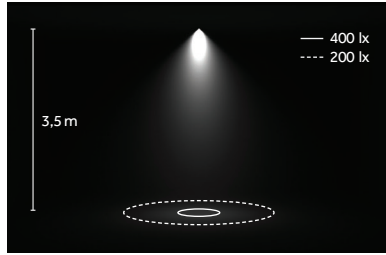
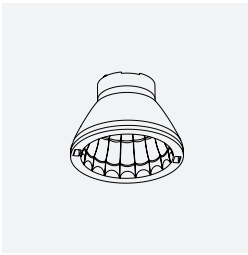


Visor/
Visiera

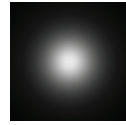
- 48
- 08
- 28
- 98

Optics

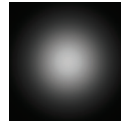
Round



LED: 18 W/24°/4000 K (NN)



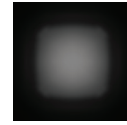
Narrow/
Stretto
9°



Medium/
Medio
24°

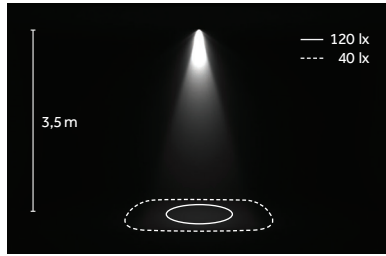
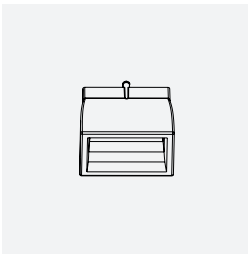


Wide/
Largo
55°

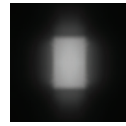


Very wide/
Molto largo
68°, 81°

Rectangular

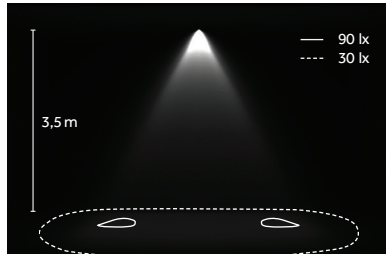
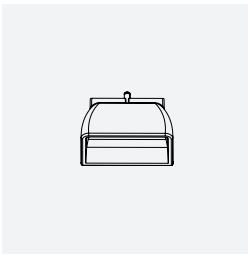


LED: 18 W/Rectangular/4000 K (NN)

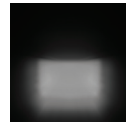


Rectangular/
Rettangolare

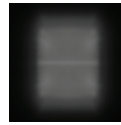
Asymmetric



LED: 18 W/Double asymmetric/4000 K (NN)



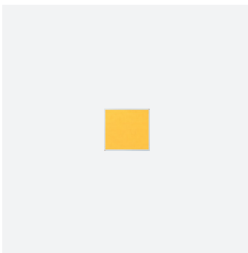
Asymmetric/
Asimetrico



Double
asymmetric/
Doppio
asimetrico

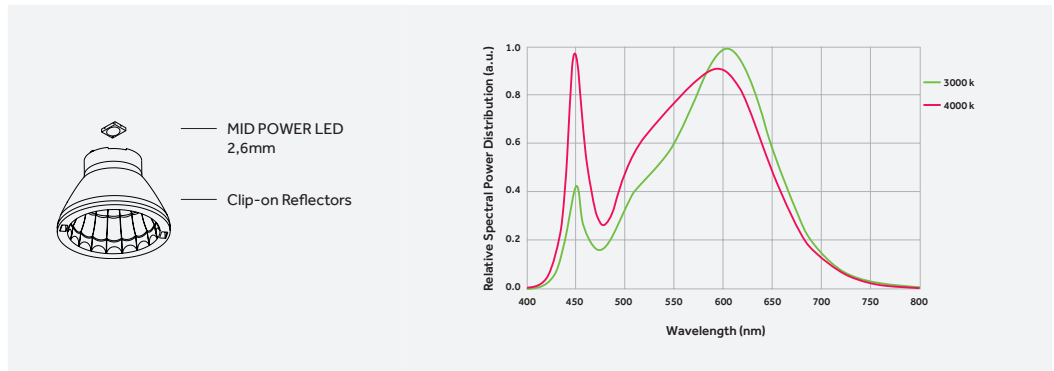
LED ARRAY

MID POWER LED



3000 K, 4000 K
SDCM<3
CRI>80

L70 B50=50,000h

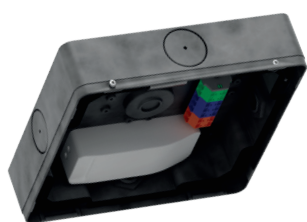


^{EN} The MID POWER LED of CELLS offers exceptional performance in a compact LED package. This mid power LED is hot-color targeted which ensures that the LEDs fall within their specified color bin at the typical application conditions of 85°C. Its high flux capability reduces the number of LEDs and enables excellent consumption savings.

^{IT} MID POWER LED di CELLS offrono prestazioni eccezionali in dimensione incredibilmente compatta. Il MID POWER LED è tarato sui colori caldi, caratteristica che assicura un'elevatissima consistenza colore alle condizioni tipiche di utilizzo di 85° C. Le performance elevate consentono risparmi di consumo eccellenti e una riduzione del numero di LED impiegati.

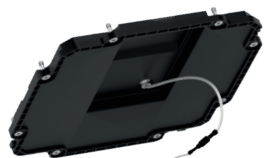
EN The extreme flexibility means a number of different finishes, diffusers, optical configurations can be selected and this combined with its performance make the luminaire perfect for both general lighting and specific applications.

IT Le eccellenti performance unite alla grande flessibilità di utilizzo del prodotto, per cui è possibile scegliere differenti finiture, diffusori e configurazioni ottiche, lo rendono ideale per l'illuminazione generale o per specifiche applicazioni

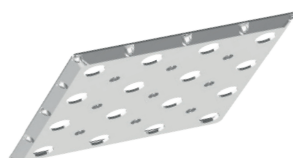


IP66 Body/Trim*

EN Hard robust die-cast aluminium body for electronic components
IT Corpo in resistente alluminio pressofuso per i componenti elettronici



EN Aluminium plate that houses the LED array
IT Piastra in alluminio che ospita la scheda LED



Plates

EN Coloured plastic plates
IT Piastre colorate in materiale plastico

Optics

EN High performance metalized collimating reflectors
IT Riflettori metallizzati ad alte prestazioni



IK10 Diffuser

EN IK10 shock resistant and high transmittance diffuser
IT Diffusore resistenti ai colpi (IK10) e ad alta trasmittanza

Surface body



EN White
IT Bianco



EN Graphite
IT Grafite

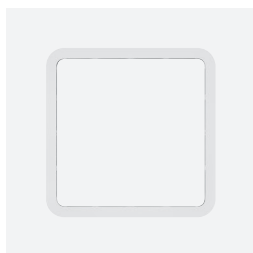


EN Grey
IT Grigio

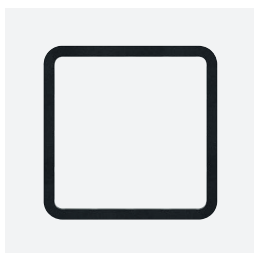


EN Raw aluminium
IT Alluminio grezzo

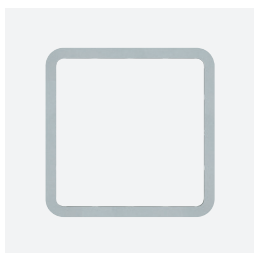
Recessed trim



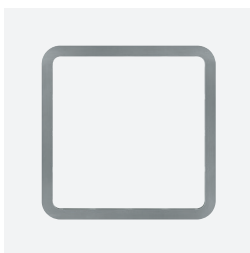
EN White
IT Bianco



EN Graphite
IT Grafite



EN Grey
IT Grigio



EN Stainless steel
IT Acciaio inox

Plates



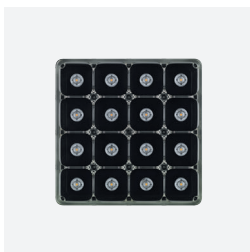
EN White
IT Bianco



EN Chrome
IT Cromato



EN Grey
IT Grigio



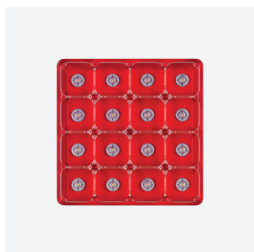
EN Graphite
IT Grafite



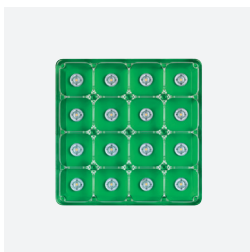
EN Yellow
IT Giallo



EN Blue
IT Blu



EN Red
IT Rosso



EN Green
IT Verde

Optics



EN Narrow
IT Stretto



EN Medium
IT Medio



EN Wide
IT Largo



EN Very wide
IT Molto largo



EN Rectangular
IT Rettangolare



EN Asymmetric
IT Asimetrico

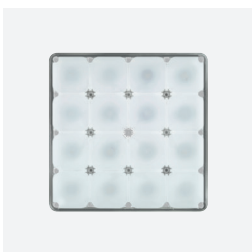


EN Double asymmetric
IT Doppio asimetrico

Diffusers



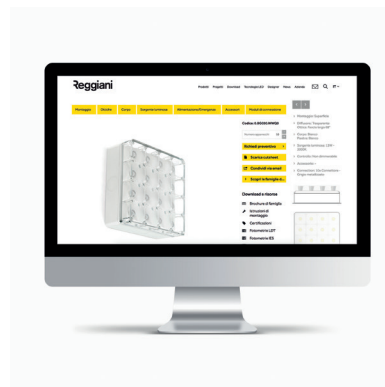
EN Transparent diffuser
IT Diffusore trasparente



EN Opal diffuser
(White plate only)
IT Diffusore opale
(Solo con plate bianca)

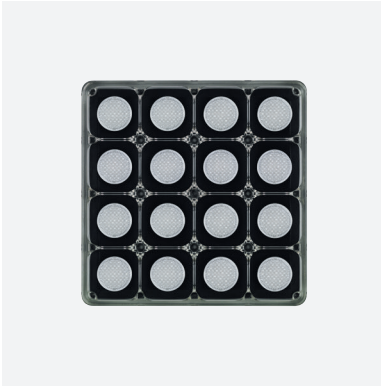


EN IK10 shock resistant diffuser
IT Diffusore resistenti ai colpi (IK10)



EN Cells configurator: try it on
www.reggiani.net
IT Configuratore Cells: provalo su
www.reggiani.net





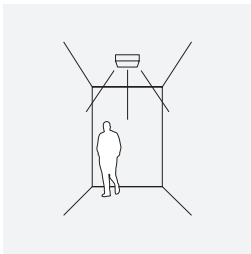
^{EN} The 16 clip-on collimating reflectors or lenses enable a number of different configurations and generate 8 kinds of light distribution.

Cells comes with narrow, medium, wide, very wide, rectangular and asymmetric optics; a double asymmetric version originating from the combination of two asymmetric optical compartments and another wide beam option with opal diffusers are also available.

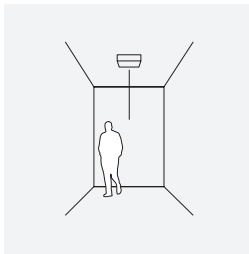
^{IT} I 16 riflettori o lenti con sistema di fissaggio clip-on permettono diverse configurazioni e danno vita a 8 distribuzioni luminose.

Tra le differenti possibilità sono offerte ottiche a fascio stretto, medio, largo, molto largo, rettangolare e asimmetrico; è disponibile anche una versione doppia asimmetrica data dalla combinazione di due gruppi di ottiche asimmetriche e un'ulteriore opzione a fascio largo con diffusore opale.

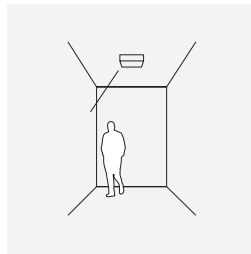
Examples



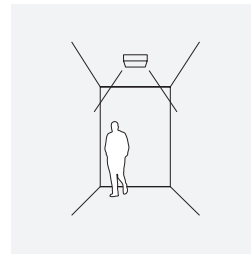
^{EN} Optics: asymmetric, rectangular or very wide. or diffuser: opal
^{IT} Ottica: Asimmetrico, Rettangolare o molto largo. o Diffuser: Opale



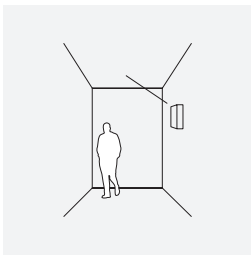
^{EN} Optics: narrow, medium or wide.
^{IT} Ottica: Stretto, Medio o Largo.



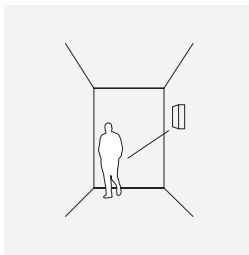
^{EN} Optics: Asymmetric
^{IT} Ottica: Asimmetrico.



^{EN} Optics: Double asymmetric.
^{IT} Ottica: Doppio asimmetrico.



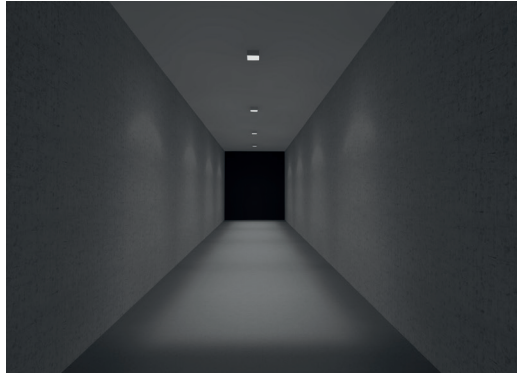
^{EN} Optics: Asymmetric.
^{IT} Ottica: Asimmetrico.



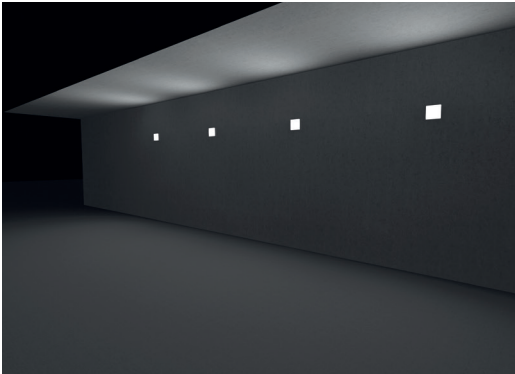
^{EN} Optics: Asymmetric.
^{IT} Ottica: Asimmetrico.



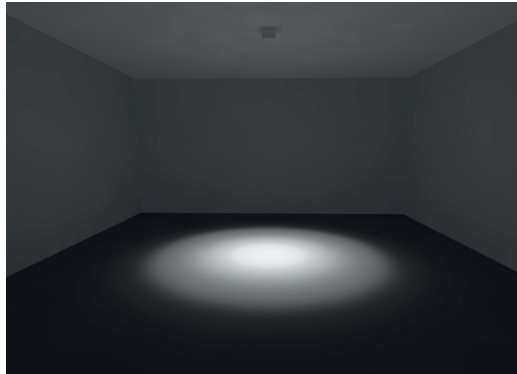
EN Optics: Double asymmetric
 IT Ottica: Doppio asimmetrico



EN Optics: asymmetric, rectangular or very wide.
 or Diffuser: opal
 IT Ottica: Asimmetrico, rettangolare o molto largo.
 o Diffuser: Opale



EN Optics: Asymmetric.
 IT Ottica: Asimmetrico.



EN Optics: narrow, medium or wide.
 IT Ottica: Stretto, Medio o Largo.

Cells Recessed

www.reggiani.net

#theilluminationcollective



—

Cells Recessed

Cells Recessed

^{EN} Developed on the basis of the surface-mounted version, recessed Cells adopts the same advanced control optics so it is possible to select the best option for general lighting or bespoke applications. The range offers two diffuser options - flush and drop.

^{EN} Sviluppata partendo dalla versione a superficie, Cells incasso presenta lo stesso sistema avanzato di controllo del fascio luminoso e consente quindi di scegliere la migliore soluzione per l'illuminazione generale oppure per applicazioni specifiche. La gamma presenta due diverse alternative: con diffusore a filo o con diffusore esposto.



^{EN} Flush version
^{IT} Versione Flush



^{EN} Drop version
^{IT} Versione Drop

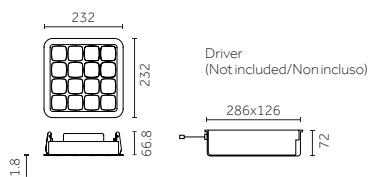


^{EN} Installation recess depth of only 100mm.
Remote driver box IP66.
^{IT} Profondità di installazione di solo 100mm.
Scatola driver remota IP66.



Flush/A filo | Transparent diffuser/Diffusore trasparente

Risk 0 1.70 IK10 IP66 850° CE CB EAC



Code example:

X . DG03 B . WW Q 0

Drivers: p.952

Finishes: p.934

Photometric data:

www.reggiani.net

Notes:

Version 13W: for environments up to 50 °C / Versione 13W: per ambienti fino a 50 °C.

* 3 hours emergency - When operating in emergency mode, luminous flux is 30% of the lumens emitted under normal operating conditions / Versione emergenza 3 ore - Il prodotto in funzionamento di emergenza emette il 30% del flusso emesso in condizioni standard

13 W LED ARRAY

Lumen delivered up to 1335 lm / Lumen maintenance: L70 B50=50,000h

Driver	Version	Optics	LED	K	CRI	lm	SDCM	Body	Plates
X Not included	DG03	B 9° Narrow	WW	3000	>80	1631	<3	Q	0
		E 24° Medium	NN	4000	>80	1745	<3	R	1
		M 55° Wide	LED nominal lumen					S	2
		O 68° Very wide					J	4	
		U - Rectangular						5	
		S - Asymmetric						6	
		T - Double asymmetric						7	
								8	

13 W Emergency* LED ARRAY

Lumen delivered up to 1335 lm / Lumen maintenance: L70 B50=50,000h

Driver	Version	Optics	LED	K	CRI	lm	SDCM	Body	Plates
X Not included	LG03	B 9° Narrow	WW	3000	>80	1631	<3	Q	0
		E 24° Medium	NN	4000	>80	1745	<3	R	1
		M 55° Wide	LED nominal lumen					S	2
		O 68° Very wide					J	4	
		U - Rectangular						5	
		S - Asymmetric						6	
		T - Double asymmetric						7	
								8	

18 W LED ARRAY

Lumen delivered up to 1728 lm / Lumen maintenance: L70 B50=50,000h

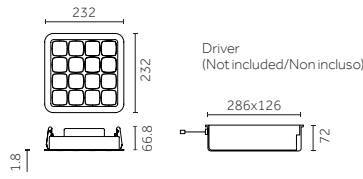
Driver	Version	Optics	LED	K	CRI	lm	SDCM	Body	Plates
X Not included	DG04	B 9° Narrow	WW	3000	>80	2150	<3	Q	0
		E 24° Medium	NN	4000	>80	2300	<3	R	1
		M 55° Wide	LED nominal lumen					S	2
		O 68° Very wide					J	4	
		U - Rectangular						5	
		S - Asymmetric						6	
		T - Double asymmetric						7	
								8	

18 W Emergency* LED ARRAY

Lumen delivered up to 1728 lm / Lumen maintenance: L70 B50=50,000h

Driver	Version	Optics	LED	K	CRI	lm	SDCM	Body	Plates
X Not included	LG04	B 9° Narrow	WW	3000	>80	2150	<3	Q	0
		E 24° Medium	NN	4000	>80	2300	<3	R	1
		M 55° Wide	LED nominal lumen					S	2
		O 68° Very wide					J	4	
		U - Rectangular						5	
		S - Asymmetric						6	
		T - Double asymmetric						7	
								8	

Flush/A filo | Opal diffuser/Diffusore Opale



Code example:

X . GG03 0 . WW 48

Drivers: p.952
 Finishes: p.934
 Photometric data:
 www.reggiani.net

Notes:
 Version 13W: for environments up to 50 °C / Versione 13 W: per ambienti fino a 50 °C.
 * 3 hours emergency - When operating in emergency mode, luminous flux is 30% of the lumens emitted under normal operating conditions / Versione emergenza 3 ore - Il prodotto in funzionamento di emergenza emette il 30% del flusso emesso in condizioni standard

13 W LED ARRAY		Lumen delivered up to 845 lm / Lumen maintenance: L70 B50=50,000h									
Driver	Version	Optics	LED	K	CRI	lm	SDCM	Body	Plates		
X Not included	GG03	0 81° Very wide	WW	3000	>80	1631	<3	48	White plate only		
			NN	4000	>80	1745	<3	08			
								28			
								00			
			LED nominal lumen								

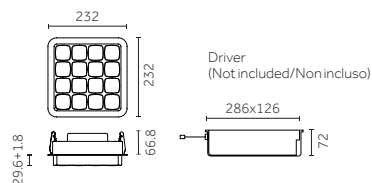
13 W Emergency* LED ARRAY		Lumen delivered up to 845 lm / Lumen maintenance: L70 B50=50,000h									
Driver	Version	Optics	LED	K	CRI	lm	SDCM	Body	Plates		
X Not included	QG03	0 81° Very wide	WW	3000	>80	1631	<3	48	White plate only		
			NN	4000	>80	1745	<3	08			
								28			
								00			
			LED nominal lumen								

18 W LED ARRAY		Lumen delivered up to 1098 lm / Lumen maintenance: L70 B50=50,000h									
Driver	Version	Optics	LED	K	CRI	lm	SDCM	Body	Plates		
X Not included	GG04	0 81° Very wide	WW	3000	>80	2150	<3	48	White plate only		
			NN	4000	>80	2300	<3	08			
								28			
								00			
			LED nominal lumen								

18 W Emergency* LED ARRAY		Lumen delivered up to 1098 lm / Lumen maintenance: L70 B50=50,000h									
Driver	Version	Optics	LED	K	CRI	lm	SDCM	Body	Plates		
X Not included	QG04	0 81° Very wide	WW	3000	>80	2150	<3	48	White plate only		
			NN	4000	>80	2300	<3	08			
								28			
								00			
			LED nominal lumen								

Drop/Esposto | Transparent diffuser/Diffusore trasparente

Risk 0 1.70 IK10 IP66 850° CE CB EAC



Code example:

X . FG03 B . WW Q 0

Drivers: p.952

Finishes: p.934

Photometric data:

www.reggiani.net

Notes:

Version 13W: for environments up to 50 °C / Versione 13W: per ambienti fino a 50 °C.

* 3 hours emergency - When operating in emergency mode, luminous flux is 30% of the lumens emitted under normal operating conditions / Versione emergenza 3 ore - Il prodotto in funzionamento di emergenza emette il 30% del flusso emesso in condizioni standard

13 W LED ARRAY

Lumen delivered up to 1335 lm / Lumen maintenance: L70 B50=50,000h

Driver	Version	Optics	LED K	CRI	lm	SDCM	Body	Plates
X Not included	FG03	B 9° Narrow	WW 3000	>80	1631	<3	Q	0
		E 24° Medium	NN 4000	>80	1745	<3	R	1
		M 55° Wide	LED nominal lumen				S	2
		O 68° Very wide				J	4	
		U - Rectangular					5	
		S - Asymmetric					6	
		T - Double asymmetric					7	
							8	

13 W Emergency* LED ARRAY

Lumen delivered up to 1335 lm / Lumen maintenance: L70 B50=50,000h

Driver	Version	Optics	LED K	CRI	lm	SDCM	Body	Plates
X Not included	PG03	B 9° Narrow	WW 3000	>80	1631	<3	Q	0
		E 24° Medium	NN 4000	>80	1745	<3	R	1
		M 55° Wide	LED nominal lumen				S	2
		O 68° Very wide				J	4	
		U - Rectangular					5	
		S - Asymmetric					6	
		T - Double asymmetric					7	
							8	

18 W LED ARRAY

Lumen delivered up to 1728 lm / Lumen maintenance: L70 B50=50,000h

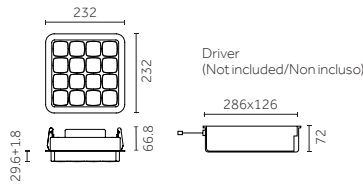
Driver	Version	Optics	LED K	CRI	lm	SDCM	Body	Plates
X Not included	FG04	B 9° Narrow	WW 3000	>80	2150	<3	Q	0
		E 24° Medium	NN 4000	>80	2300	<3	R	1
		M 55° Wide	LED nominal lumen				S	2
		O 68° Very wide				J	4	
		U - Rectangular					5	
		S - Asymmetric					6	
		T - Double asymmetric					7	
							8	

18 W Emergency* LED ARRAY

Lumen delivered up to 1728 lm / Lumen maintenance: L70 B50=50,000h

Driver	Version	Optics	LED K	CRI	lm	SDCM	Body	Plates
X Not included	PG04	B 9° Narrow	WW 3000	>80	2150	<3	Q	0
		E 24° Medium	NN 4000	>80	2300	<3	R	1
		M 55° Wide	LED nominal lumen				S	2
		O 68° Very wide				J	4	
		U - Rectangular					5	
		S - Asymmetric					6	
		T - Double asymmetric					7	
							8	

Drop/Esposto | Opal diffuser/Diffusore Opale



Code example:

X . HG03 0 . WW 48

Drivers: p.952
 Finishes: p.934
 Photometric data:
 www.reggiani.net

Notes:
 Version 13W: for environments up to 50 °C / Versione 13 W: per ambienti fino a 50 °C.
 * 3 hours emergency - When operating in emergency mode, luminous flux is 30% of the lumens emitted under normal operating conditions / Versione emergenza 3 ore - Il prodotto in funzionamento di emergenza emette il 30% del flusso emesso in condizioni standard

13 W LED ARRAY		Lumen delivered up to 845 lm / Lumen maintenance: L70 B50=50,000h									
Driver	Version	Optics	LED	K	CRI	lm	SDCM	Body	Plates		
X Not included	HG03	0 81° Very wide	WW	3000	>80	1631	<3	48	White plate only		
			NN	4000	>80	1745	<3	08			
			LED nominal lumen					28			
								00			

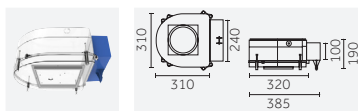
13 W Emergency* LED ARRAY		Lumen delivered up to 845 lm / Lumen maintenance: L70 B50=50,000h									
Driver	Version	Optics	LED	K	CRI	lm	SDCM	Body	Plates		
X Not included	RG03	0 81° Very wide	WW	3000	>80	1631	<3	48	White plate only		
			NN	4000	>80	1745	<3	08			
			LED nominal lumen					28			
								00			

18 W LED ARRAY		Lumen delivered up to 1098 lm / Lumen maintenance: L70 B50=50,000h									
Driver	Version	Optics	LED	K	CRI	lm	SDCM	Body	Plates		
X Not included	HG04	0 81° Very wide	WW	3000	>80	2150	<3	48	White plate only		
			NN	4000	>80	2300	<3	08			
			LED nominal lumen					28			
								00			

18 W Emergency* LED ARRAY		Lumen delivered up to 1098 lm / Lumen maintenance: L70 B50=50,000h									
Driver	Version	Optics	LED	K	CRI	lm	SDCM	Body	Plates		
X Not included	RG04	0 81° Very wide	WW	3000	>80	2150	<3	48	White plate only		
			NN	4000	>80	2300	<3	08			
			LED nominal lumen					28			
								00			

Accessories

Mounting accessories/ Accessori montaggio



Description

Housings, to be installed in reinforced concrete and masonry/
Cassaforme, da installare nel cemento armato e laterizio

Code

0.26115.0000

Electrical Devices

Driver/ Alimentazioni

13 W LED ARRAY EMERGENCY

Type	Code	Size (mm)	IP	Tech. specifications	Connectable fixtures
On/Off	0.30034.0000		66	220-240Vac / 50/60Hz	Max: 1
Phase-cut	T.30034.0000		66	220-240Vac / 50/60Hz	Max: 1
Dimm 1-10V	V.30034.0000		66	220-240Vac / 50/60Hz	Max: 1
DALI	D.30034.0000		66	220-240Vac / 50/60Hz	Max: 1
DALI + Bluetooth	H.30034.0000		66	220-240Vac / 50/60Hz	Max: 1

18 W LED ARRAY EMERGENCY

Type	Code	Size (mm)	IP	Tech. specifications	Connectable fixtures
On/Off	0.30036.0000		66	220-240Vac / 50/60Hz	Max: 1
Phase-cut	T.30036.0000		66	220-240Vac / 50/60Hz	Max: 1
Dimm 1-10V	V.30036.0000		66	220-240Vac / 50/60Hz	Max: 1
DALI	D.30036.0000		66	220-240Vac / 50/60Hz	Max: 1
DALI + Bluetooth	H.30036.0000		66	220-240Vac / 50/60Hz	Max: 1

13 W LED ARRAY

Type	Code	Size (mm)	IP	Tech. specifications	Connectable fixtures
On/Off	0.30033.0000		66	220-240Vac / 50/60Hz	Max: 1
Phase-cut	T.30033.0000		66	220-240Vac / 50/60Hz	Max: 1
Dimm 1-10V	V.30033.0000		66	220-240Vac / 50/60Hz	Max: 1
DALI	D.30033.0000		66	220-240Vac / 50/60Hz	Max: 1
DALI + Bluetooth	H.30033.0000		66	220-240Vac / 50/60Hz	Max: 1

18 W LED ARRAY

Type	Code	Size (mm)	IP	Tech. specifications	Connectable fixtures
On/Off	0.30035.0000		66	220-240Vac / 50/60Hz	Max: 1
Phase-cut	T.30035.0000		66	220-240Vac / 50/60Hz	Max: 1
Dimm 1-10V	V.30035.0000		66	220-240Vac / 50/60Hz	Max: 1
DALI	D.30035.0000		66	220-240Vac / 50/60Hz	Max: 1
DALI + Bluetooth	H.30035.0000		66	220-240Vac / 50/60Hz	Max: 1

Notes:

3 hours emergency - When operating in emergency mode, luminous flux is 30% of the lumens emitted under normal operating conditions/
Versione emergenza 3 ore - Il prodotto in funzionamento di emergenza emette il 30% del flusso emesso in condizioni standard.





—

Cells Surface

Cells Surface

^{EN} Cells Surface is a range of surface-mounted luminaires for IP66 and IK10 ceiling or wall installation. The luminaire modules can be joined together using the special connector to create more complex lighting configurations. Cells comes in a wide range of finishes and is perfect for lighting urban areas, outdoor pathways, public and private facilities, parking lots and multi-storey car parks.

^{IT} Cells Surface è una gamma di apparecchi da superficie IK 10 e IP66 idonea per l'installazione a soffitto o a parete. Grazie allo specifico connettore è possibile collegare diversi prodotti tra loro, realizzando configurazioni illuminotecniche più complesse. Disponibile in un'ampia serie di finiture, Cells trova la sua collocazione ideale nell'illuminazione di contesti urbani, camminamenti esterni, strutture pubbliche e private, parcheggi e autosilo.



^{EN} Ceiling installation
^{IT} Installazione a soffitto

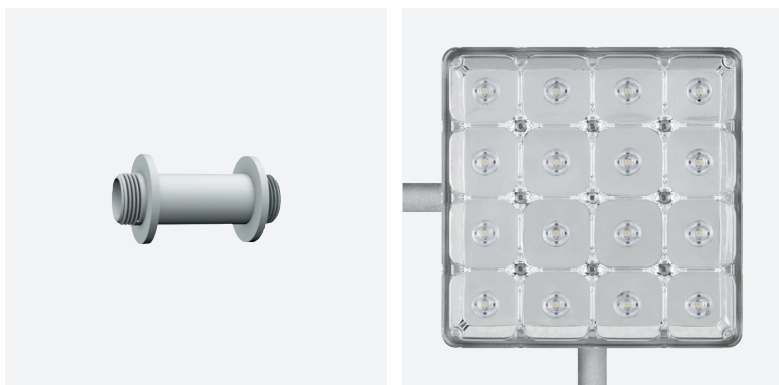


^{EN} Wall installation
^{IT} Installazione a muro



EN The connector comes in the same standard finishes as the luminaire body and can be used to join a number of Cells luminaires together, thereby creating modular, flexible and aesthetically unique lighting systems.

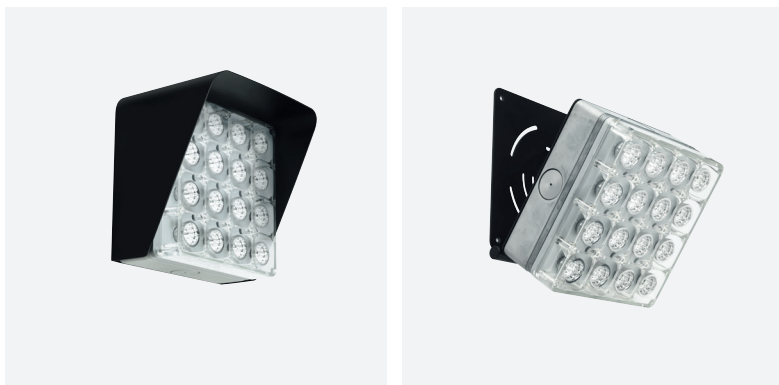
IT L'accessorio connettore, disponibile nelle stesse finiture della base dell'apparecchio, permette di collegare più Cells tra loro, realizzando così sistemi modulari flessibili ed esteticamente unici.



EN Connector
IT Connettore

EN The anti-glare accessories and adjustable brackets make the luminaire even more flexible and fitting for a myriad of applications.

IT Gli accessori antiabbagliamento e le staffe orientabili aumentano ulteriormente la flessibilità del prodotto e le sue possibilità di utilizzo in diversi ambienti.



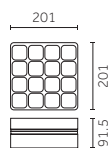
EN Visor
IT Visiera

EN 90° adjustable bracket
IT Staffa per orientamento 90°



Transparent diffuser/Diffusore trasparente

Risk 0 2.10 IK10 IP66 850° CE CB EAC



Code example:

0 . BG03 B . WW Q 0

Accessories: p.962

Finishes: p.934

Photometric data:

www.reggiani.net

Notes:

Version 13W: for environments up to 50 °C / Versione 13W: per ambienti fino a 50 °C.

* 3 hours emergency - When operating in emergency mode, luminous flux is 30% of the lumens emitted under normal operating conditions / Versione emergenza 3 ore - Il prodotto in funzionamento di emergenza emette il 30% del flusso emesso in condizioni standard

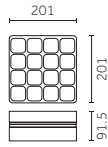
13 W LED ARRAY		Lumen delivered up to 1335 lm / Lumen maintenance: L70 B50=50,000h							
Driver	Version	Optics	LED	K	CRI	lm	SDCM	Body	Plates
0 On/Off	BG03	B 9° Narrow	WW	3000	>80	1631	<3	Q	0
T Phase-cut		E 24° Medium	NN	4000	>80	1745	<3	R	1
V Dimm 1-10V		M 55° Wide	LED nominal lumen			S	2		
D DALI		0 68° Very wide				V	4		
H Bluetooth		U - Rectangular				5	5		
		S - Asymmetric				6	6		
		T - Double asymmetric				7	7		
						8	8		

13 W Emergency* LED ARRAY		Lumen delivered up to 1335 lm / Lumen maintenance: L70 B50=50,000h							
Driver	Version	Optics	LED	K	CRI	lm	SDCM	Body	Plates
0 On/Off	MG03	B 9° Narrow	WW	3000	>80	1631	<3	Q	0
T Phase-cut		E 24° Medium	NN	4000	>80	1745	<3	R	1
V Dimm 1-10V		M 55° Wide	LED nominal lumen			S	2		
D DALI		0 68° Very wide				V	4		
		U - Rectangular				5	5		
		S - Asymmetric				6	6		
		T - Double asymmetric				7	7		
						8	8		

18 W LED ARRAY		Lumen delivered up to 1728 lm / Lumen maintenance: L70 B50=50,000h							
Driver	Version	Optics	LED	K	CRI	lm	SDCM	Body	Plates
0 On/Off	BG04	B 9° Narrow	WW	3000	>80	2150	<3	Q	0
T Phase-cut		E 24° Medium	NN	4000	>80	2300	<3	R	1
V Dimm 1-10V		M 55° Wide	LED nominal lumen			S	2		
D DALI		0 68° Very wide				V	4		
H Bluetooth		U - Rectangular				5	5		
		S - Asymmetric				6	6		
		T - Double asymmetric				7	7		
						8	8		

18 W Emergency* LED ARRAY		Lumen delivered up to 1728 lm / Lumen maintenance: L70 B50=50,000h							
Driver	Version	Optics	LED	K	CRI	lm	SDCM	Body	Plates
0 On/Off	MG04	B 9° Narrow	WW	3000	>80	2150	<3	Q	0
T Phase-cut		E 24° Medium	NN	4000	>80	2300	<3	R	1
V Dimm 1-10V		M 55° Wide	LED nominal lumen			S	2		
D DALI		0 68° Very wide				V	4		
		U - Rectangular				5	5		
		S - Asymmetric				6	6		
		T - Double asymmetric				7	7		
						8	8		

Opal diffuser/Diffusore Opale



Code example:

0 . **CG03** **0** . **WW 48**

Accessories: p.962

Finishes: p.934

Photometric data:

www.reggiani.net

Notes:

Version 13W: for environments up to 50 °C / Versione 13 W: per ambienti fino a 50 °C.

* 3 hours emergency - When operating in emergency mode, luminous flux is 30% of the lumens emitted under normal operating conditions / Versione emergenza 3 ore - Il prodotto in funzionamento di emergenza emette il 30% del flusso emesso in condizioni standard

13 W LED ARRAY		Lumen delivered up to 845 lm / Lumen maintenance: L70 B50=50,000h							
Driver	Version	Optics	LED	K	CRI	lm	SDCM	Body	Plates
0 On/Off	CG03	0 81° Very wide	WW	3000	>80	1631	<3	48	White plate only
T Phase-cut			NN	4000	>80	1745	<3	08	
V Dimm 1-10V			LED nominal lumen					28	
D DALI								98	
On request									
H Bluetooth									

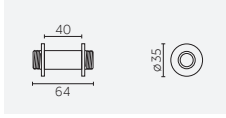
13 W Emergency* LED ARRAY		Lumen delivered up to 845 lm / Lumen maintenance: L70 B50=50,000h							
Driver	Version	Optics	LED	K	CRI	lm	SDCM	Body	Plates
0 On/Off	NG03	0 81° Very wide	WW	3000	>80	1631	<3	48	White plate only
T Phase-cut			NN	4000	>80	1745	<3	08	
V Dimm 1-10V			LED nominal lumen					28	
D DALI								98	

13 W LED ARRAY		Lumen delivered up to 1098 lm / Lumen maintenance: L70 B50=50,000h							
Driver	Version	Optics	LED	K	CRI	lm	SDCM	Body	Plates
0 On/Off	CG04	0 81° Very wide	WW	3000	>80	2150	<3	48	White plate only
T Phase-cut			NN	4000	>80	2300	<3	08	
V Dimm 1-10V			LED nominal lumen					28	
D DALI								98	
On request									
H Bluetooth									

18 W Emergency* LED ARRAY		Lumen delivered up to 1098 lm / Lumen maintenance: L70 B50=50,000h							
Driver	Version	Optics	LED	K	CRI	lm	SDCM	Body	Plates
0 On/Off	NG04	0 81° Very wide	WW	3000	>80	2150	<3	48	White plate only
T Phase-cut			NN	4000	>80	2300	<3	08	
V Dimm 1-10V			LED nominal lumen					28	
D DALI								98	

Accessories

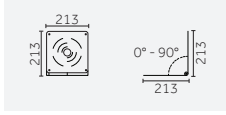
Mounting accessories/ Accessori montaggio



Description
Connector/
Connettore

Code
0.26030.00

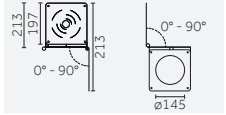
Finishes
48
08
28
98



Description
90° adjustable bracket/
Staffa per orientamento 90°

Code
0.26111.00

Finishes
48
08
28
00

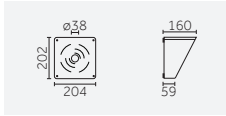


Description
90° two axis adjustable bracket/
Staffa per doppio orientamento 90°

Code
0.26112.00

Finishes
48
08
28
00

Cells accessories/ Accessori Cells



Description
Visor/
Visiera

Code
0.26110.00

Finishes
48
08
28
00

