

STREAM TEARDROP



Surface - mounted power LED
High efficiency cleanroom lighting
Laminar flow
Energy efficiency
Easy installation
Longevity

BUCK GmbH

Hietzinger Kai 67-69, 1130 Wien
Büroadresse: Fleischmarkt 1 | 6. Stock |
1010 Wien | Österreich
office@bucklicht.at
www.bucklicht.at
Copyright © 2023 BUCK

BUCK
www.buck.lighting

STREAM TEARDROP

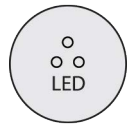
Surface-mounted linear LED luminaire designed for general illumination in clean & dry areas with laminar airflow.

The STREAM TEARDROP luminaire embodies circular economy principles with its replaceable electronic unit, reducing the need for total fixture replacements. Plus, it offers an exceptional 50,000-hour operational life (L80B10), ensuring long-lasting performance. Furthermore, its strict adherence to the SDCM 3 colour accuracy standard guarantees consistent, high-quality lighting.

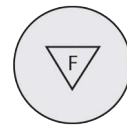
Lighting applications:

Micro-electronics industry

Automotive industry - battery production



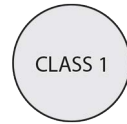
Lamp type



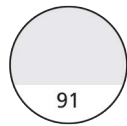
Mounting on normally flammable surfaces



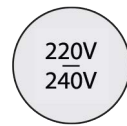
Ceiling mounted



Electrical safety



Anodization in natural aluminium colour



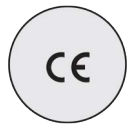
Voltage



Class 1 according to classification 14644



Frequency



CE marking



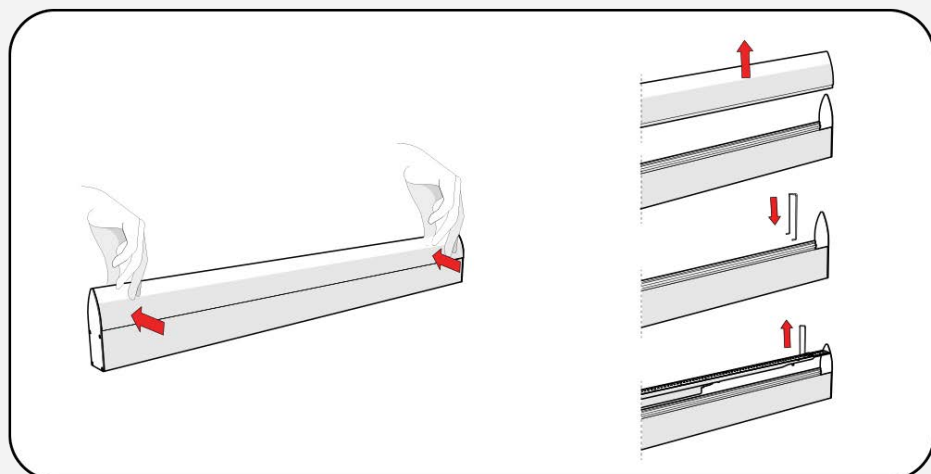
Ingress protection



OPTICAL EQUIPMENT

Opal PMMA diffuser in specific aerodynamic form, linear ribs inside for visual comfort and a smooth outer surface for easy cleaning.

Tool-free removable diffuser without removing end caps.



HOUSING

Luminaire of extruded aluminum.
Finish anodization in natural aluminum colour. Other finishes available on request.

LED modules

White light: zhaga LED module, energy efficiency up to 203 lm/W, rated AA+.
The electronic unit is completely replaceable.
Emergency lighting and DALI dimmable upon request

CONTAMINATION CONTROL

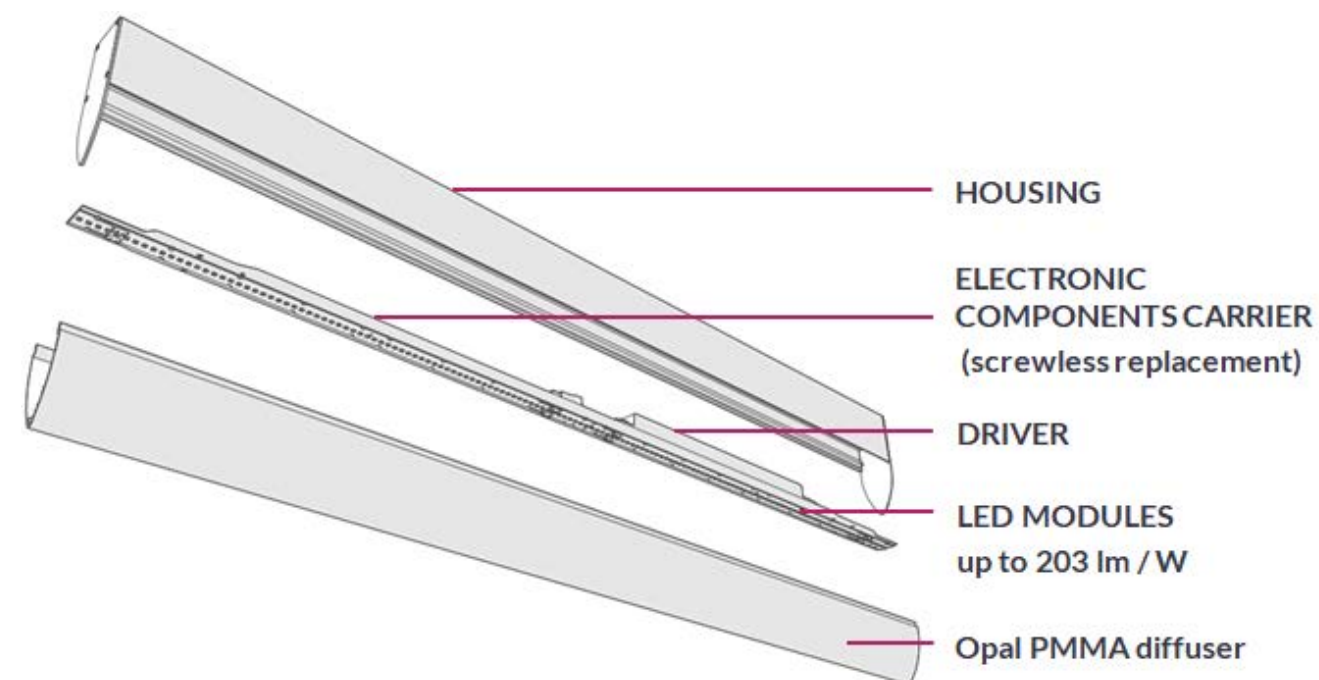
Air cleanness class 1 in compliance with ISO 14644-14.

INSTALLATION

The STREAM TEARDROP luminaire can be installed on all kinds of rigid ceilings by

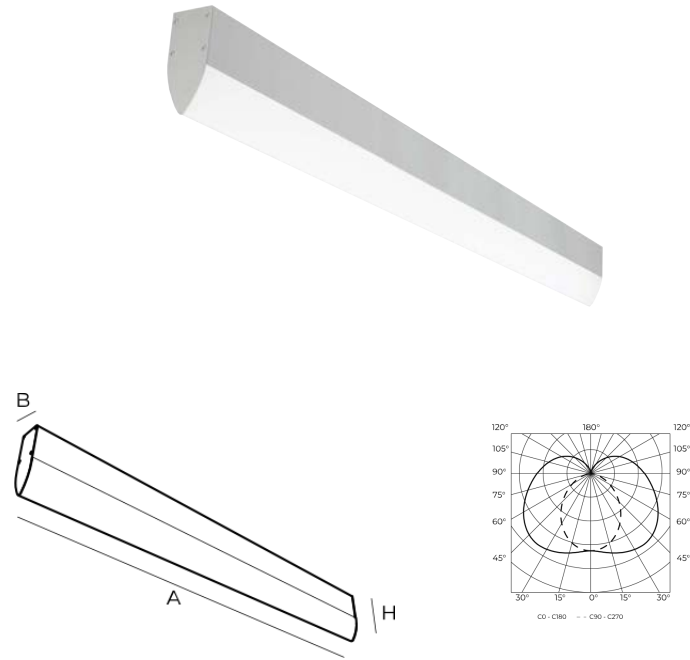
1. Direct screwing – type A
2. External clamping on T55 ceilings – type B

DESIGN OVERVIEW



* DIFFERENT END CAPS FOR IP54 UPON REQUEST

STREAM TEARDROP



Dimensions A/B/H	1126x46x140mm / 1406x46x140mm
Ingress protection rating	IP43
Finish	anodization in natural aluminium colour
Weight	2.70/ 3.2kg
Luminaire luminous flux (t_a=25°)	4500/7500lm
Total power	40/69W
Luminaire efficiency	100/113 lm/W
Light colour temperature	4000K
CRI	>80
LED service life	60.000h(L80B10) SDCM 3
Power supply	220-240V, 50-60Hz
Control gear	ECG, DALI

